



## Hilary Mews, SE1

£1,650,000

A highly attractive, end of terrace, four storey, freehold town house, built in 2021, with a large eat-in kitchen and separate utility room on the ground floor, a spacious living room and a study on the first floor, three generous double bedrooms, two bathrooms and two additional WCs, plus comprehensive air-conditioning, a stunning private roof terrace with far reaching skyline views.

Enviably located in the heart of SE1, moments from Borough and London Bridge stations, this property is surrounded by the energy of Borough Market and the cultural allure of the South Bank. Riverside cafés, independent galleries, and acclaimed restaurants create a vibrant neighbourhood atmosphere.

### Features

- End of Terrace
- Freehold Townhouse
- Three Double Bedrooms
- Comprehensive Air-Conditioning
- 24 Hour Concierge
- Secure Gated Entry
- High Spec Finish





## Hilary Mews, SE1

The main living space is located on the first floor of the house with large floor to ceiling windows and a dual aspect, along with a study room and additional WC. On the ground floor is a fully integrated kitchen with a breakfast bar, ample room for dining and a separate WC, plus a separate utility room.

The master bedroom boasts a large en-suite bathroom and a luxurious walk-in wardrobe. The second and third bedrooms are also large doubles with built-in wardrobes and are served by a three piece family bathroom.

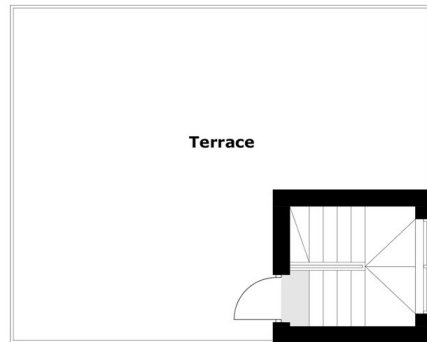
The house has been finished to a very high standard with high quality integrated appliances, under floor heating and attractive contemporary design. There is a fantastic sense of space from top to bottom, from the kitchen through to the roof terrace.

Brandon House/Hilary Mews is one of SE1's premier gated developments, with a very exclusive feel and a high quality finish. Benefits include a 24 hour concierge, cycle storage, secure entry and lift access.

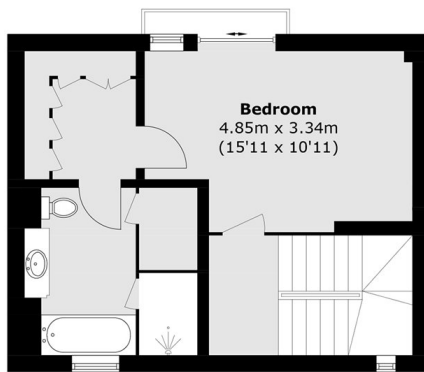




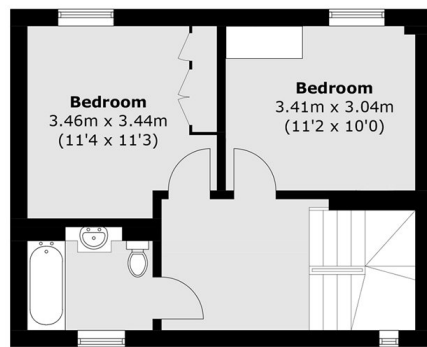
# Hilary Mews, London, SE1



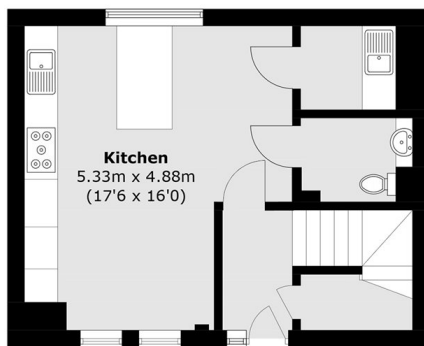
**Fourth Floor**



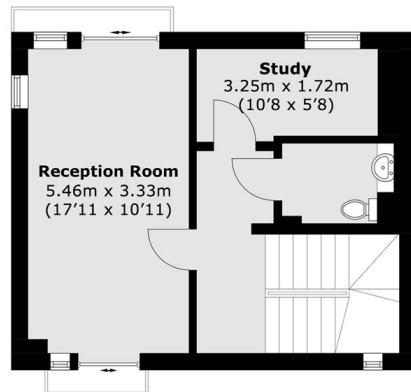
**Second Floor**



**Third Floor**



**Ground Floor**



**First Floor**

Total area (approx.): 155.1 sq. m (1,669.3 sq. ft)  
Terrace area (approx.): 36.8 sq. m (396.1 sq. ft)