



Webber Street, SE1

£923 Per week

A two bedroom two bathroom penthouse apartment with a larger than average terrace available to rent, within a small boutique style development.

Conveniently located a short walk from both Southwark & Waterloo Stations. The ever popular South Bank & Borough Market are also close by.

Features

- Two Bedrooms
- Two Bathrooms
- Penthouse Apartment
- Larger Private Terrace
- Great Location



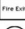






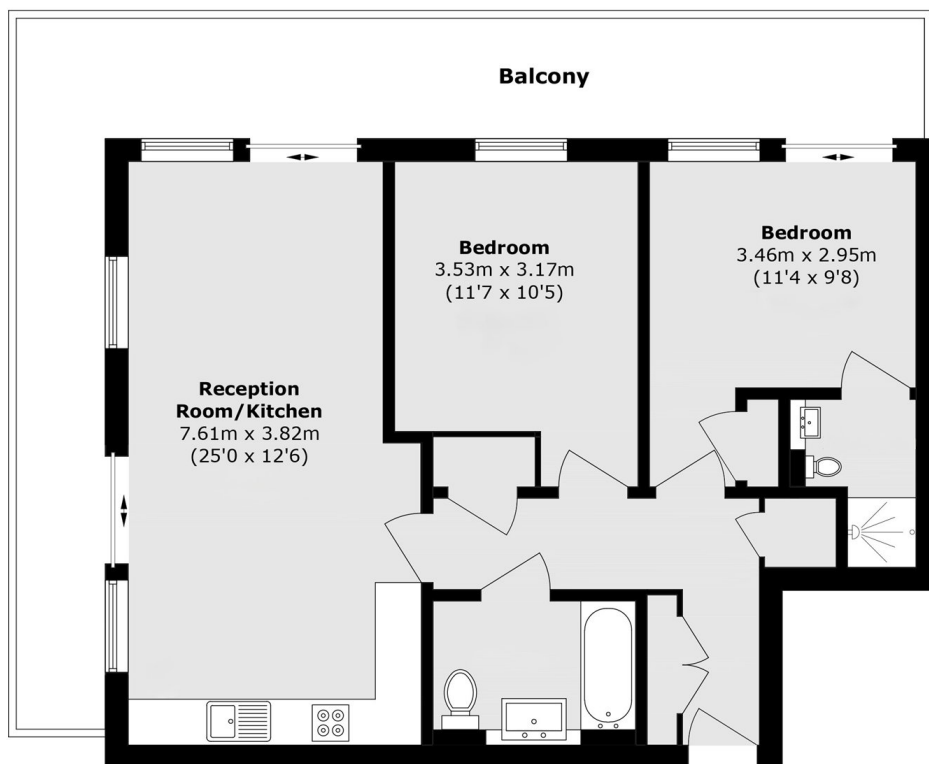
Webber Street, SE1

A two bedroom two bathroom penthouse apartment with a larger than average terrace available to rent, within a small boutique style development.



Webber Street, London, SE1

-  Smoke Detector
-  Fire Blanket
-  Fire Exit
-  Fire Extinguisher
-  Heat Detector
-  Boiler
-  Carbon Monoxide Detector



Total area (approx.): 73.3 sq. m (789.0 sq. ft)

Balcony area (approx.): 27.3 sq. m (293.8 sq. ft)

National Guidelines (may differ depending on Local Authority).

- E) 4.6 square meters > = no one**
- D) 4.6 - 6.5 square meters = 1/2 person (Child up to 10 years)**
- C) 6.5 - 8.4 square meters = 1 person**
- B) 8.4 - 10.2 square meters = 1 1/2 people**
- A) 10.2 meters < = 2 people**

Dexters

London Bridge
54 Borough High Street
London
SE1 1XL
Lettings
020 7650 5101

Energy Rating: B. We aim to make our particulars both accurate and reliable. However they are not guaranteed; nor do they form part of an offer or contract. If you require clarification on any points then please contact us, especially if you're traveling some distance to view. Please note that appliances and heating systems have not been tested and therefore no warranties can be given as to their good working order.

 **RICS** | Regulated
Estate Agent
and Letting Agent

dexters.co.uk