



## Tabard Street, SE1

### £600,000

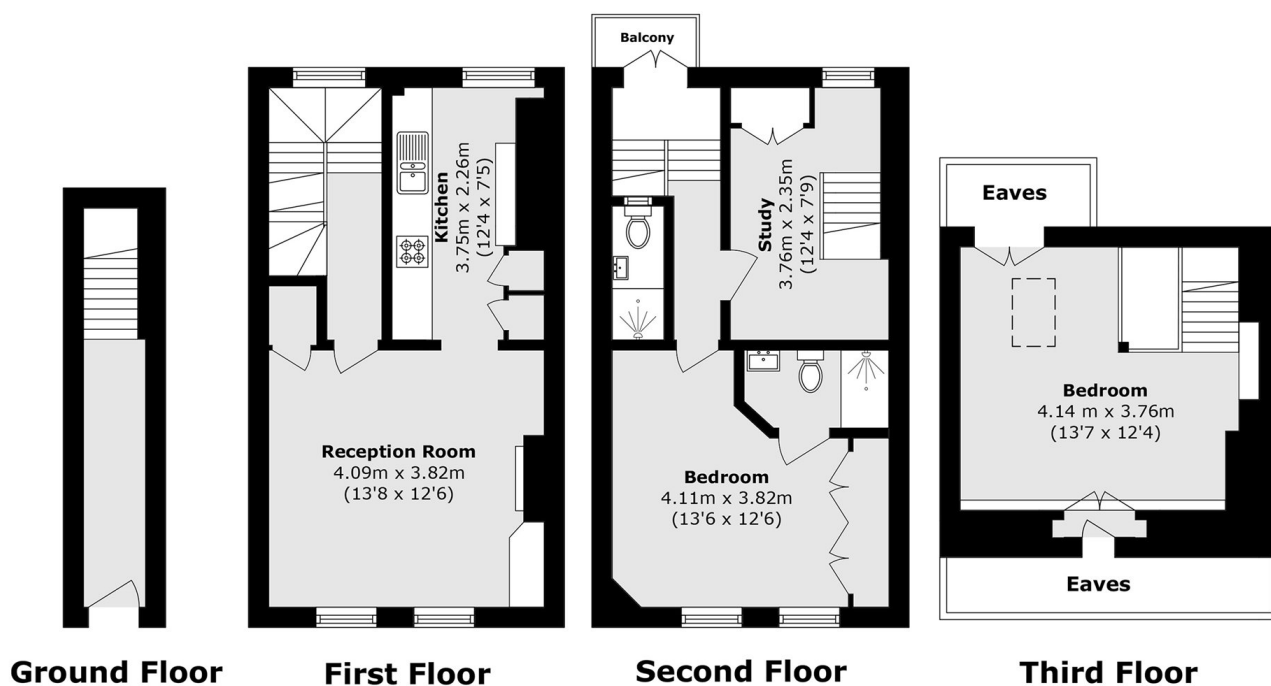
A rarely available triplex maisonette with its own private entrance, featuring a spacious reception room and contemporary kitchen on the first floor, with two double bedrooms, two bathrooms, and an additional study on the upper levels. Offered chain-free, this property presents a unique opportunity in a sought-after location.

Tabard Street is incredibly well-located, virtually adjacent to Borough station and Borough High Street, and very close by to London Bridge, the South Bank and Borough Market, offering excellent transport links and surrounded by many shops, restaurants and other attractions.

### Features

- Almost 900 Sq Ft
- Split Level Maisonette
- Two Double Bedrooms
- Two Bathrooms
- Additional Study Space
- Juliette Balcony
- Chain Free Sale

# Tabard Street, London, SE1



Total area (approx.): 84.3 sq. m (907.4 sq. ft)

Balcony area (approx.): 1.3 sq. m (14.0 sq. ft)

(Excluding Eaves)