



Spurgeon Street, SE1

£576 Per week

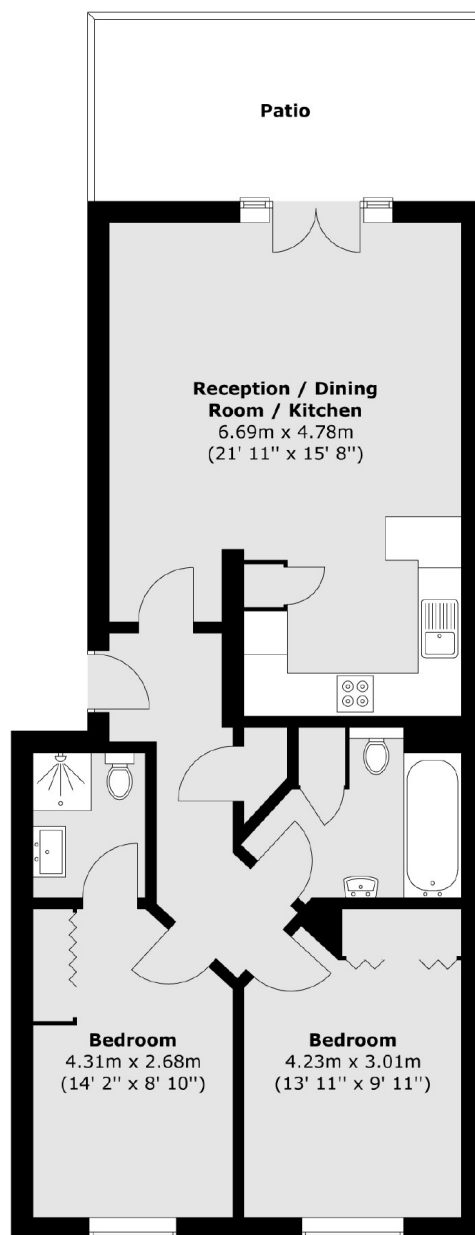
Two double bedroom, two bathroom apartment forming part of Chadwick Square. With a modernised kitchen and bathrooms, the apartment is in great condition and has a terrace overlooking the communal gardens.

Chadwick Square is conveniently located a short walk from both London Bridge and Borough Stations. The ever popular Bermondsey Street is close by with an abundance of highly rated eateries, wine bars and pubs.

Features

- Two Bedrooms
- Two Bathrooms
- Modernised Kitchen & Bathrooms
- Private Gated Development
- Communal Gardens

Spurgeon Street, London, SE1



Total area (approx.) : 73.6 sq. m (792 sq. ft)
Total patio area (approx.) : 12 sq. m (129 sq. ft)

Dexters

London Bridge
54 Borough High Street
London
SE1 1XL
Lettings
020 7650 5101

Energy Rating: B. We aim to make our particulars both accurate and reliable. However they are not guaranteed; nor do they form part of an offer or contract. If you require clarification on any points then please contact us, especially if you're traveling some distance to view. Please note that appliances and heating systems have not been tested and therefore no warranties can be given as to their good working order.

 **RICS** | Regulated
Estate Agent
and Letting Agent

[dexters.co.uk](https://www.dexters.co.uk)