



Monnow Road, SE1

£540,000

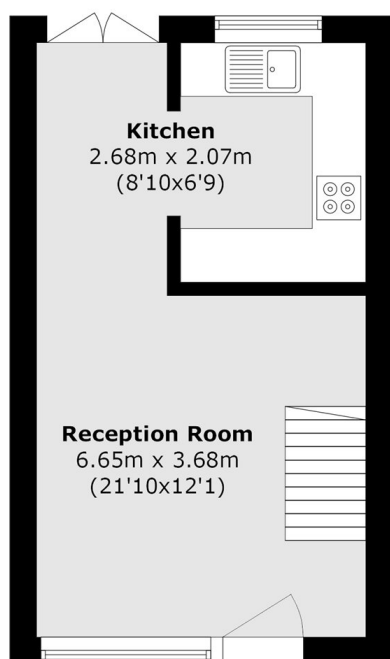
A highly attractive two-storey freehold house offering a spacious living room and a fully fitted kitchen overlooking a generous rear garden. The property also comprises two bedrooms, a modern bathroom and the benefit of secure off-street parking.

Monnow Road is a quiet residential street, discreetly set back from Southwark Park Road and St James's Road, moments from Thoburn Square. The surrounding area combines a relaxed, residential atmosphere with the energy of Bermondsey's cafés, independent shops and riverside walks, while Bermondsey Underground Station and South Bermondsey Station are both close at hand.

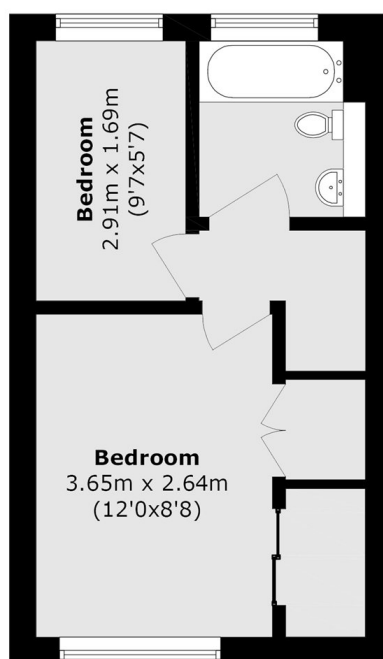
Features

- Two Storey Freehold House
- Private Rear Garden
- Off-Street Parking
- Large Living Room & Kitchen
- Two Bedrooms
- Modern Bathroom

Monnow Road, London, SE1



Ground Floor



First Floor

Total area (approx.): 49.0 sq. m (527.4 sq. ft)