



## Bell Yard Mews, SE1

£692 Per week

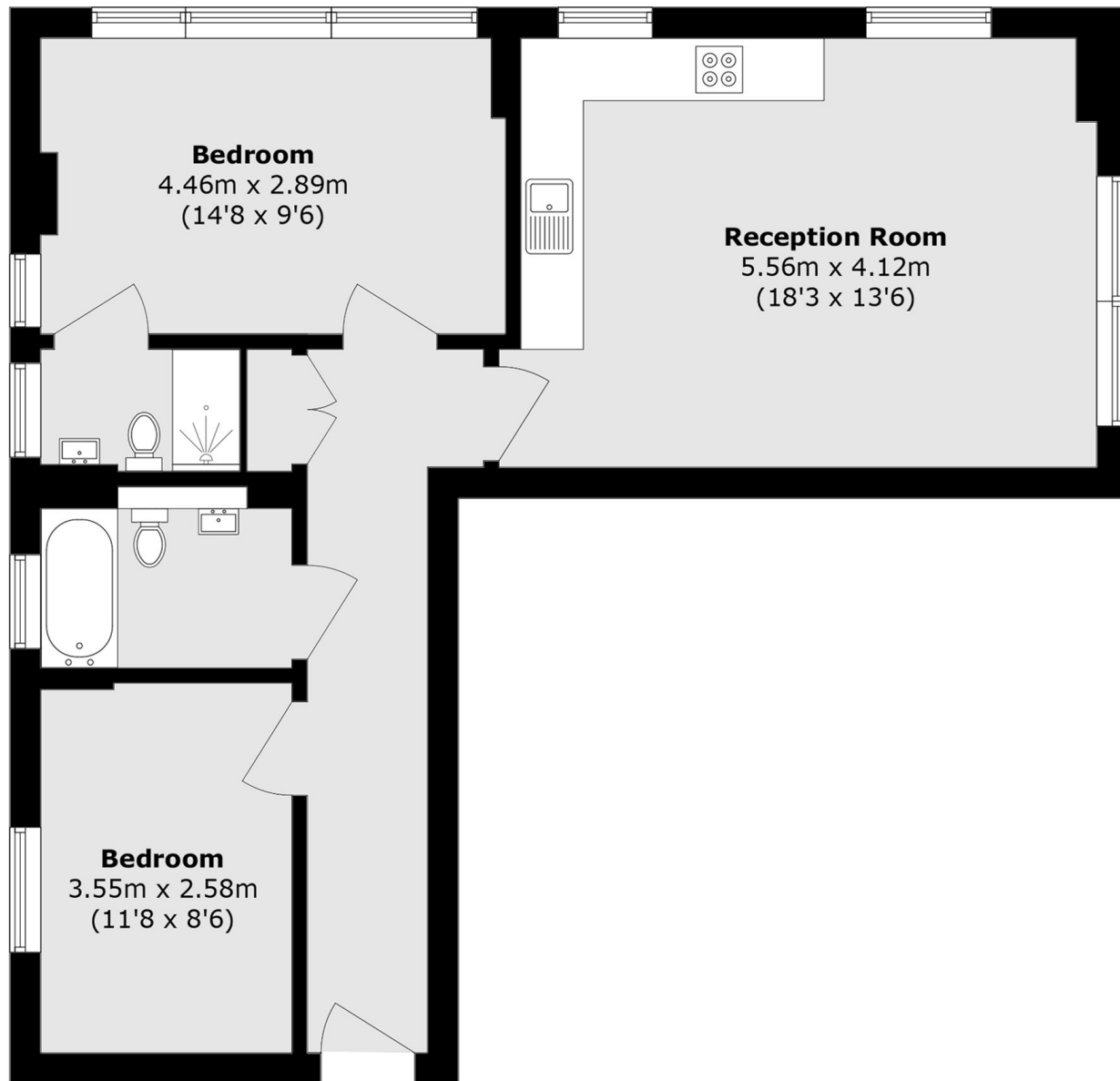
A highly attractive second floor flat with a triple aspect, a spacious south-facing, open-plan living room and kitchen, two double bedrooms, two bathrooms and ample space for storage.

Located on the highly sought after Bermondsey Street with its abundance of independent shops, bars, cafes and restaurants. London Bridge Station is within a short walk.

### Features

- Quiet Mews Development
- Lift Access & Secure Entry
- Two Double Bedrooms
- Two Bathrooms
- Open Plan Living
- Very Centrally Located

# Bell Yard Mews, London, SE1



Total area (approx.): 62.2 sq. m (669.5 sq. ft)