



Tabard Street, SE1

£470,000

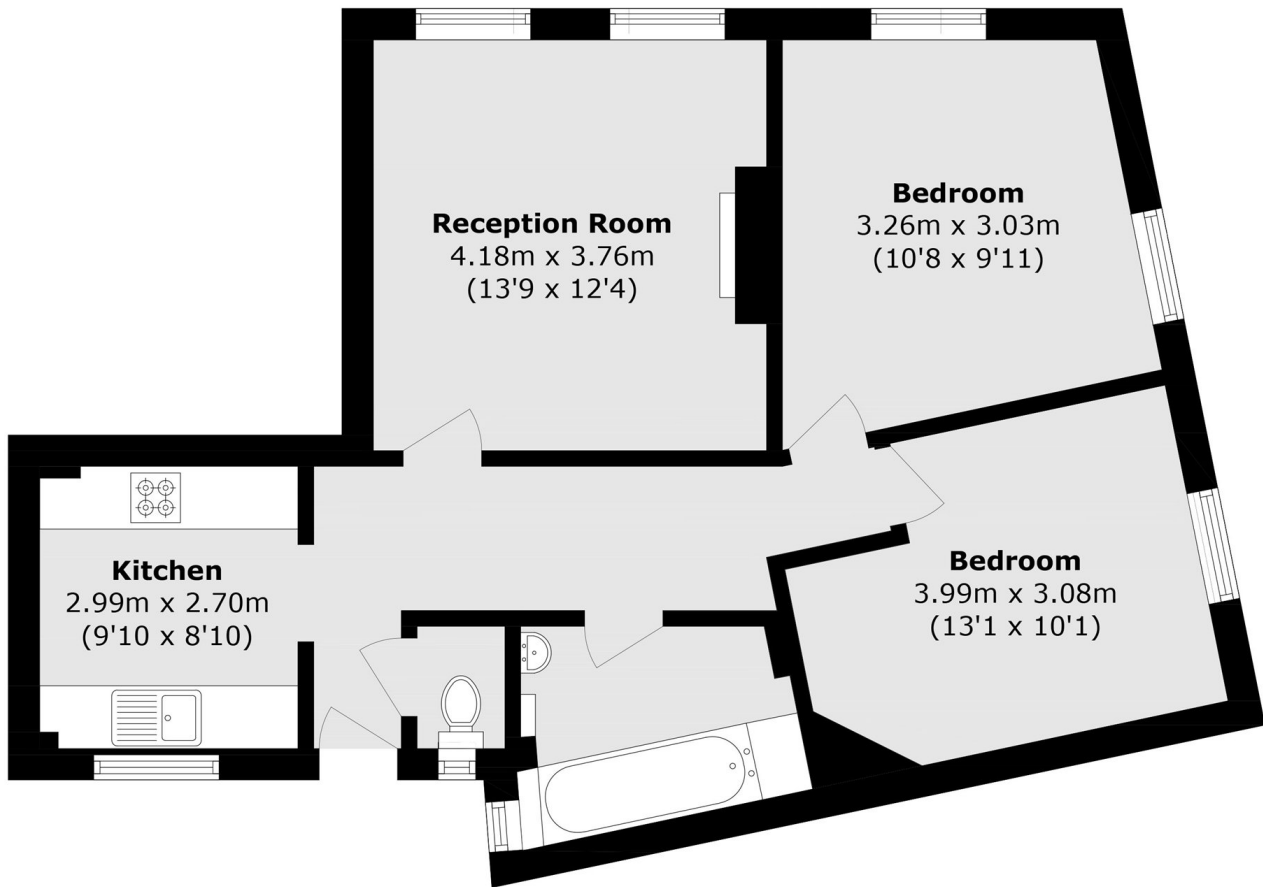
A beautifully presented south-facing flat with high ceilings, large sash windows, and abundant natural light. The property comprises two generous double bedrooms, a spacious living room, a separate modern kitchen, ample storage, and a three-piece bathroom. Permit parking is also available.

Pilgrim House is ideally located near the leafy Tabard Gardens, Borough High Street and the vibrant Bermondsey Street, with its cafés, boutiques, galleries and markets. Borough and London Bridge Stations offer quick connections across London, while the South Bank and historic Borough Market provide riverside walks, cultural attractions, and gourmet delights.

Features

- South-Facing
- Sash Windows & High Ceilings
- Two Double Bedrooms
- Large Living Room
- Separate Modern Kitchen
- Permit Parking Available

Tabard Street, London, SE1



Total area (approx.): 62.7 sq. m (674.9 sq. ft)