



Whites Grounds Estate, SE1

£495,000

A beautifully presented two-bedroom flat set in one of SE1's most vibrant and sought-after neighbourhoods.

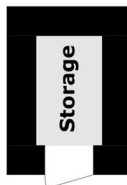
Bright and generously proportioned throughout, the apartment offers a spacious reception room with ample space for both living and dining. The separate kitchen is fully fitted with quality appliances and a clean, contemporary finish. Both bedrooms are full doubles with excellent space for freestanding and built-in storage. A well-appointed three-piece bathroom completes this truly turnkey property.

Located just off Bermondsey Street, the apartment sits moments from its wealth of independent shops, restaurants and galleries. London Bridge Station, the South Bank, the Shard, Maltby Street Market and Borough Market are all within easy reach.

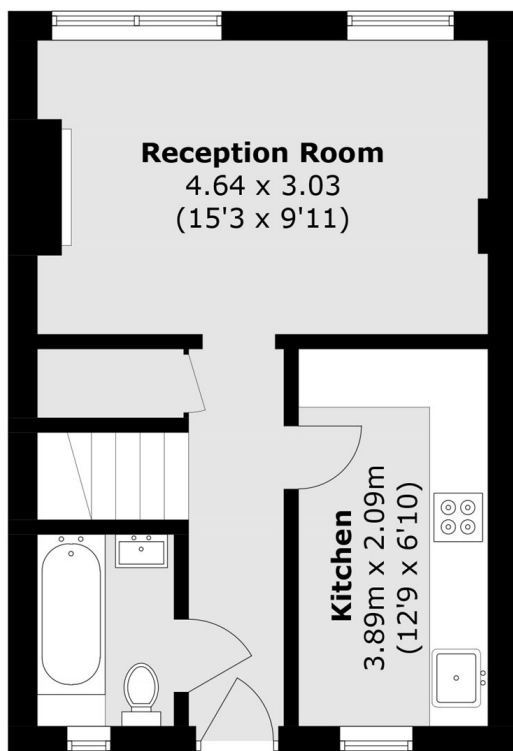
Features

Beautifully Finished
Excellent Location
Two Double Bedrooms
Separate Kitchen/ Living Spaces
Double Glazed Windows

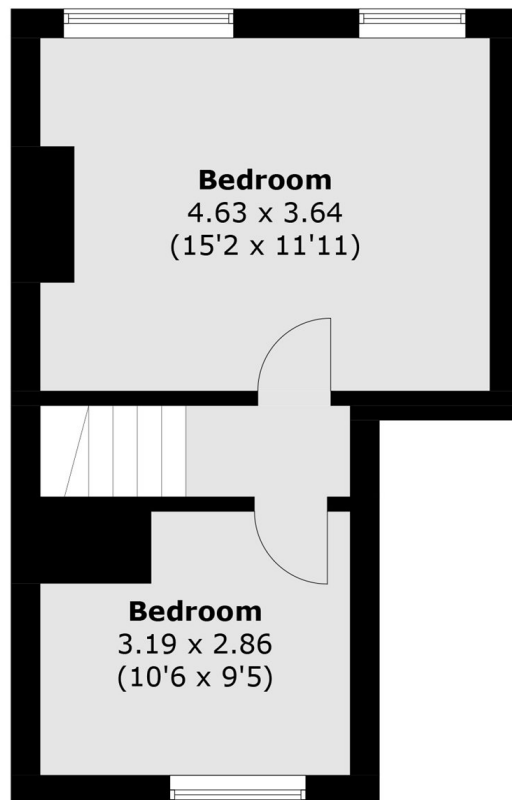
Whites Grounds Estate, London, SE1



(Not Shown In Actual
Location / Orientation)



First Floor



Second Floor

Total area (approx.): 62.4 sq. m (671.6 sq. ft)
External Storage: 0.8 sq. m (8.6 sq. ft)