



**Marcia Road, SE1**

**£875,000**

**Dexters**



## Marcia Road, SE1

A highly attractive, 4/5 double bedroom, mid-terrace, freehold house, split over three floors, with a front sitting room/bedroom a separate kitchen-diner, two bathrooms, a very generous principal suite and an unconverted loft. Plus a further downstairs WC and a private south-facing garden.

The main living space occupies the ground floor, with a front sitting room/fifth bedroom, with an attractive bay window, plus a separate kitchen-diner to the back. There is a private south-facing garden to the rear.

All 4/5 bedrooms are good sizes, with ample space for storage, served by a family bathroom, and an additional en-suite bathroom, whilst there is an further WC on the ground floor. The master bedroom benefits from a large walk-in wardrobe, leading through to the en-suite bathroom.

Spread over almost 1,300 sq ft, this is a substantial, three storey, family home, yet retaining significant extension potential both into the loft and to the rear of the property. There is existing precedent along the road.

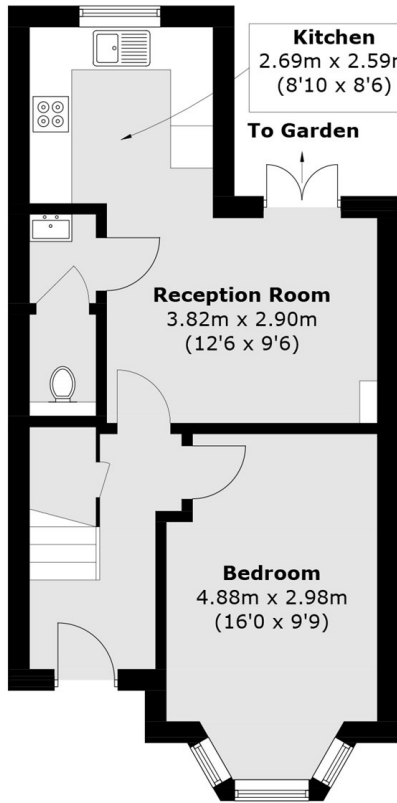
Marcia Road is quietly tucked away off the Old Kent Road, ideally positioned near the proposed Bakerloo Line extension. Residents enjoy easy access to Burgess Park, as well as a host of local shops, cafés, and amenities. Excellent transport links connect you to Bermondsey and Elephant & Castle, making this location both convenient and well-connected.

### Features

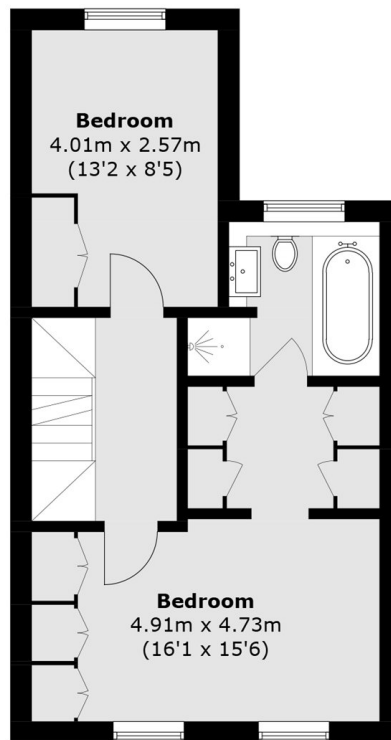
- Freehold House
- 4/5 Double Bedrooms
- Three Storeys
- Two Bathrooms
- Additional WC
- Private Rear Garden



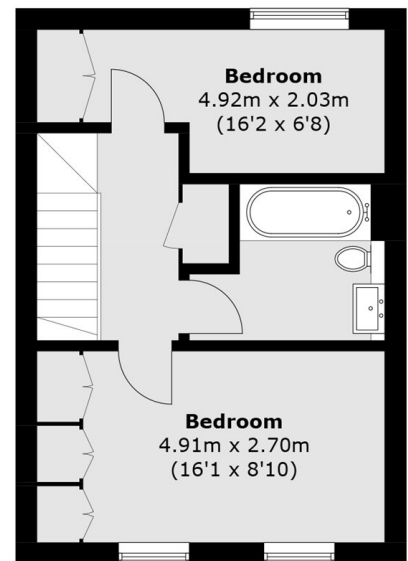
# Marcia Road, London, SE1



**Ground Floor**



**First Floor**



**Second Floor**

Total area (approx.): 119.2 sq. m (1,283.0 sq. ft)