



Clapham Road, SW9

£495,000

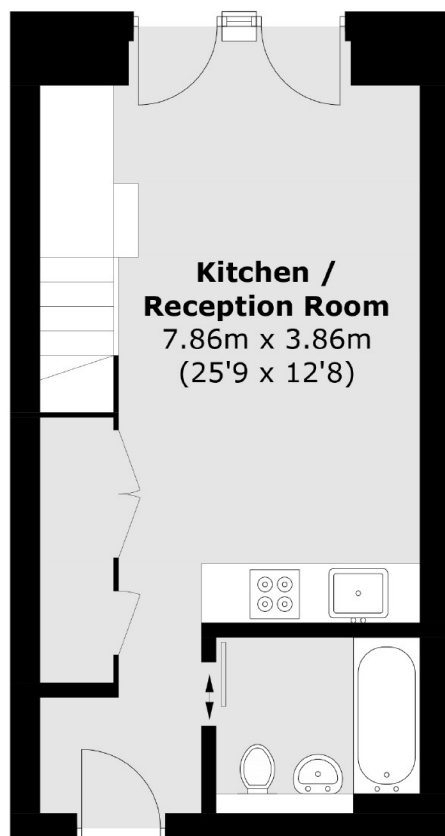
A very unique duplex apartment, that has been finished to an incredibly high standard throughout, as well as including the practicality of plenty of built-in storage. Residents at the Printworks benefit from Siemens appliances, a district heating system and the option to purchase an underground parking spot! As well as a 24-hour concierge on site.

Located within walking distance to Stockwell Station, residents benefit from quick and easy access into London Victoria. There are a wide variety of amenities nearby including bars, restaurants, shops and green spaces.

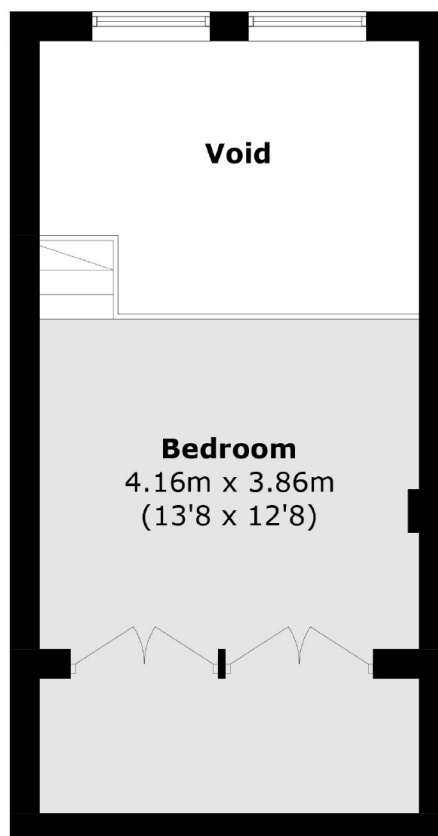
Features

- Historic Building Built In 1896
- Open Plan Kitchen/Lounge
- Stockwell Station
- Plenty Of Storage Throughout
- 24/7 Concierge
- New Build Warranty - 10 Years
- Underground Parking Available

Clapham Road, London, SW9



Ground Floor



Mezzanine

Total area (approx.): 50.7 sq. m (545.7 sq. ft)
(Excluding Void)