

Salamanca Place, SE1

£329,950

A stylish one bedroom apartment on the ninth floor just moments from the River Thames. The property is being sold with no onward chain and benefits from a sociable open plan kitchen and reception room with Juliet balcony. There is good storage throughout the property, lift access and access to a communal 17th floor roof terrace benefitting from incredible views of the city.

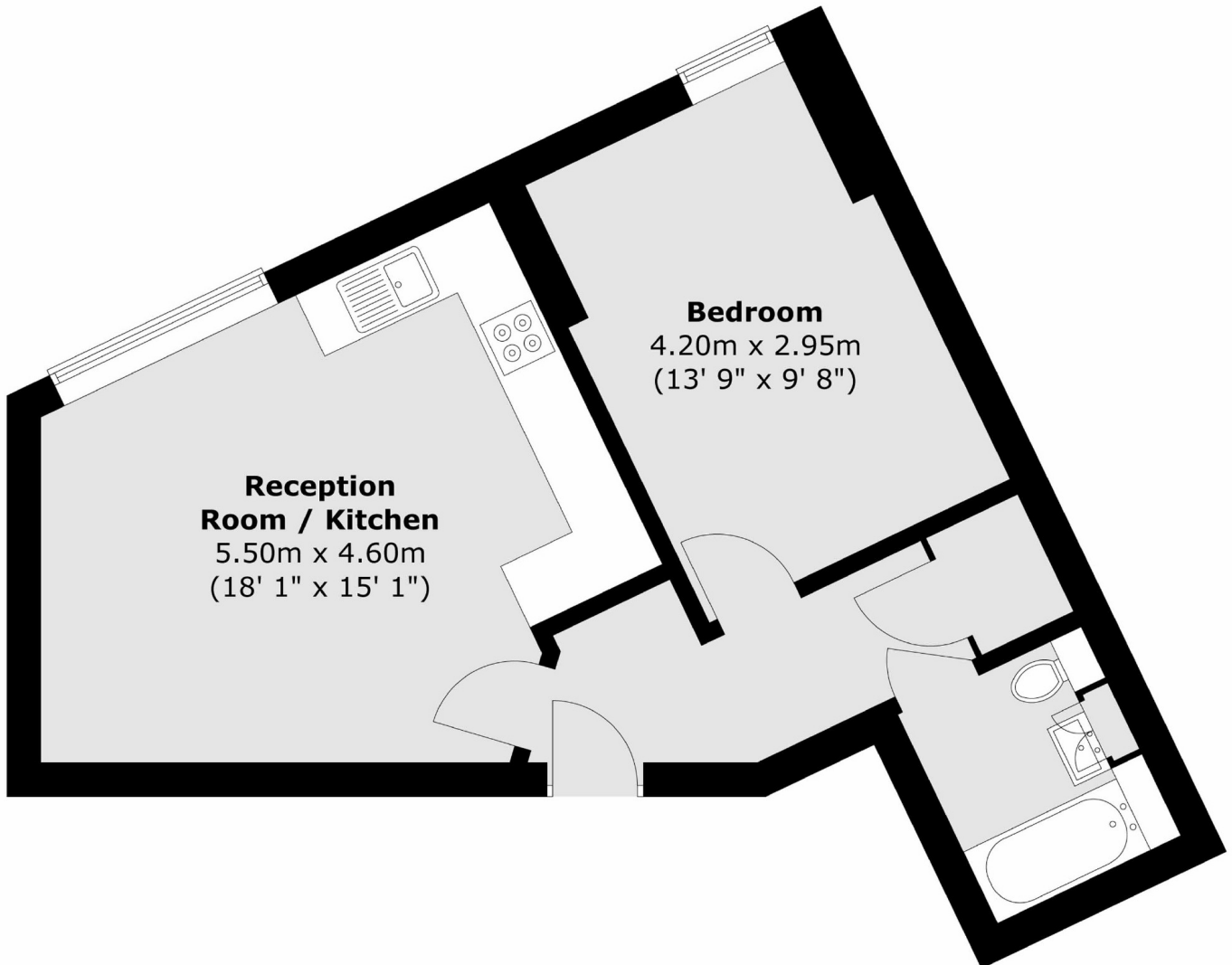
Peacefully located just moments from the River Thames and with convenient access to a vibrant selection of bars, restaurants, and cultural attractions in nearby Waterloo and along the South Bank. The West End is also just a short journey across the river. Excellent transport links include Vauxhall Station, offering both Victoria Line Underground and National Rail services, as well as numerous frequent bus routes.

Features

- One Bedroom
- Excellent Location
- Communal Roof Terrace
- No Onward Chain
- Good Storage
- Open Plan Living

Salamanca Place, London, SE1

Ninth Floor



Total area (approx.) : 43 sq. m (463 sq. ft)