

Halsmere Road, SE5

£825,000

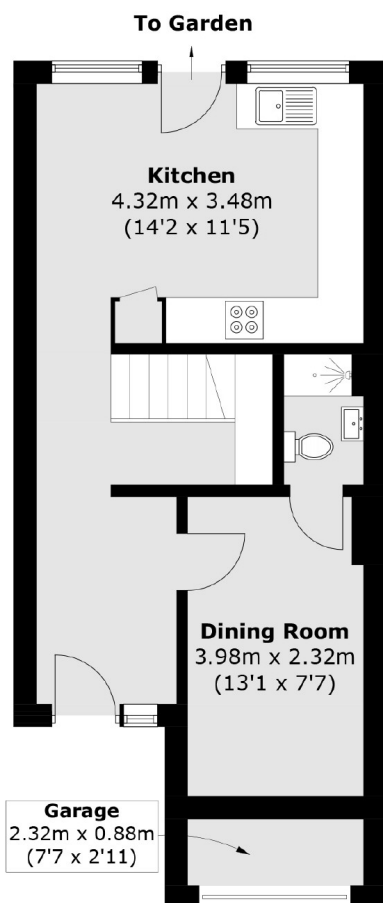
A stylish three bedroom townhouse in excellent condition throughout. This versatile family home is flooded with natural light and benefits from well proportioned rooms and a beautiful rear garden.

Halsmere road is a peaceful cul de sac on the cusp of Zone 1 and on the doorstep of beautiful Myatt's Fields Park. There are a number of local shops, restaurants and boutiques close by and excellent transport links including Oval tube station (Northern Line) Loughborough Junction (National Rail) and a number of good local bus routes.

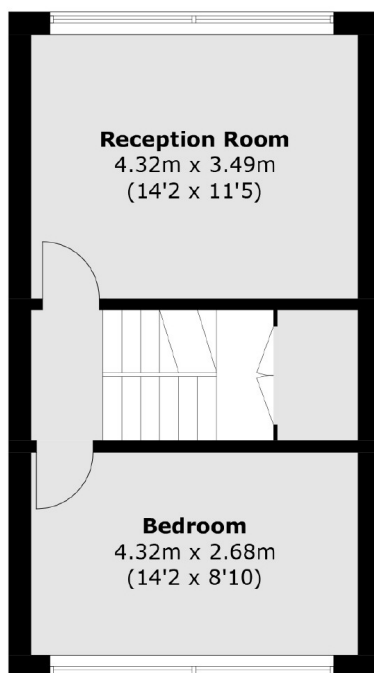
Features

- Freehold Townhouse
- Excellent Reception Space
- Bright and Spacious
- South Facing Garden
- Great Condition

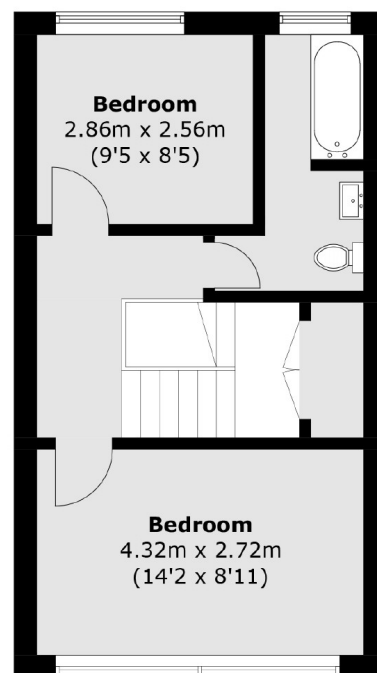
Halsmere Road, London, SE5



Ground Floor



First Floor



Second Floor

Total area (approx.): 109.3 sq. m (1,176.4 sq. ft)
Garage: 2.0 sq. m (21.5 sq. ft)
Total: 111.3 sq. m (1,197.9 sq. ft)