



Robsart Street, SW9

£460,000

Offers in excess of £460,000. A fantastic two bedroom, two bathroom modern apartment, accessed via its own private entrance. This stylish home has a spacious open-plan reception room with ample space for both relaxing and dining, seamlessly connected to contemporary kitchen. Finished to a good standard throughout the property offers comfortable and practical living as well as direct access onto a front patio.

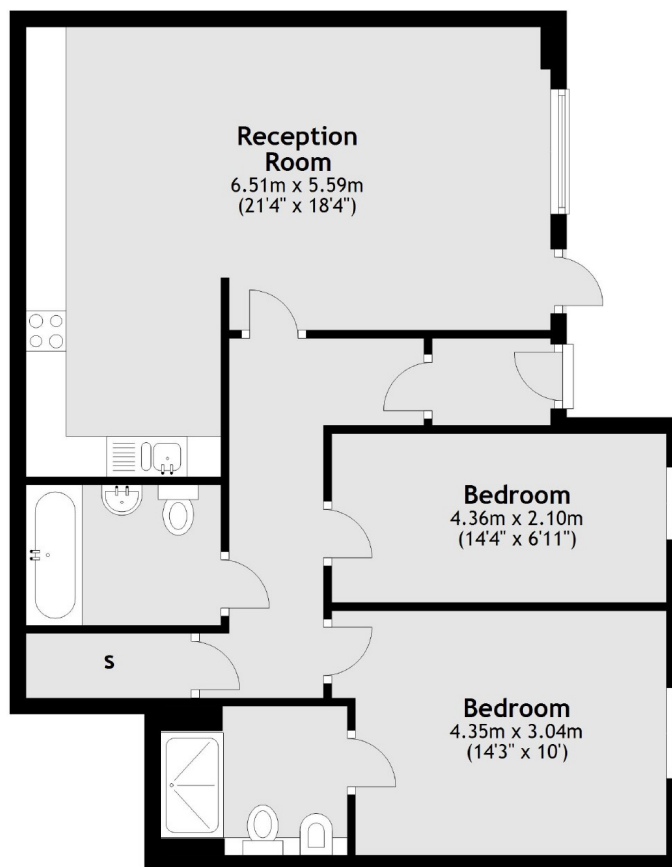
Located within walking distance to Stockwell & Brixton Underground stations both having links to the Northern and Victoria line, and set on the south side of Slade Gardens Park.

Features

- Modern Apartment
- Two Bedrooms
- Open Plan Living
- Excellent Location
- Private Patio
- Two Bathrooms

Robsart Street, London, SW9

Ground Floor



Total area: approx. 71.2 sq. metres (766.6 sq. feet)

Dexters

Kennington
181 Kennington Lane
London
SE11 4EZ
Sales
020 7650 5102

Energy Rating: C. We aim to make our particulars both accurate and reliable. However they are not guaranteed; nor do they form part of an offer or contract. If you require clarification on any points then please contact us, especially if you're traveling some distance to view. Please note that appliances and heating systems have not been tested and therefore no warranties can be given as to their good working order.

 **RICS** | Regulated
Estate Agent
and Letting Agent

[dexters.co.uk](https://www.dexters.co.uk)