



## Evandale Road, SW9

£3,800 Per calendar month

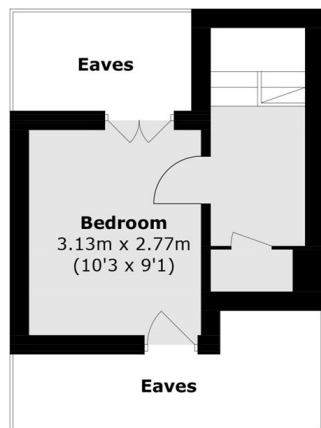
Located on a quiet residential street, this charming four-bedroom mid-terraced house offers generous living space with a private garden. The property features an open-plan kitchen and reception, four double bedrooms, a family bathroom, and double glazing throughout.

Evandale Road is just a short walk from the tennis courts and open green spaces of Myatt's Fields Park, and conveniently close to the popular Crown & Anchor pub, local shops, a supermarket, and the F45 gym on Brixton Road.

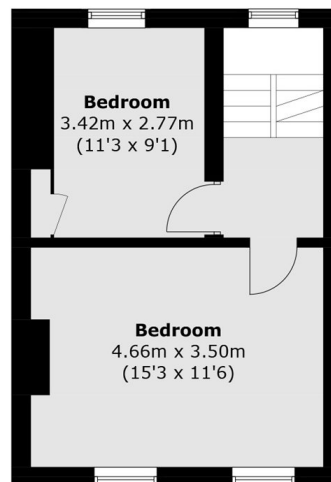
### Features

- Mid-Terraced House
- Four Bedrooms
- Double Glazing
- Private Garden
- Quiet Street
- Myatt's Fields Park

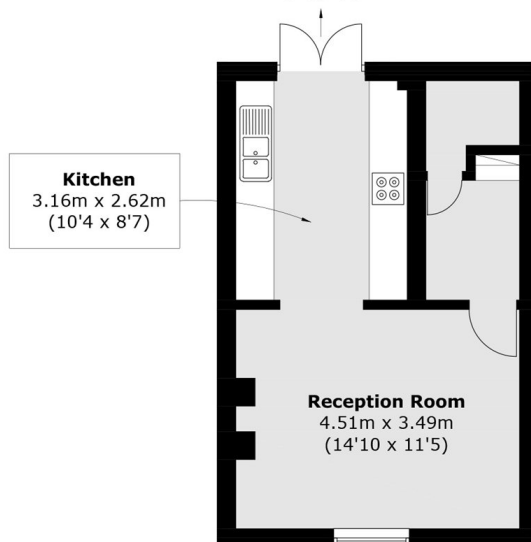
# Evandale Road, London, SW9



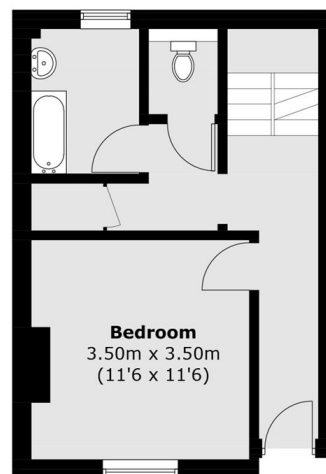
**Second Floor**



**First Floor**



**Lower Ground Floor**



**Ground Floor**

Total area (approx.): 111.9 sq. m (1204.3 sq. ft) (Excluding Eaves)