



Vauxhall Walk, SE11

£375,000

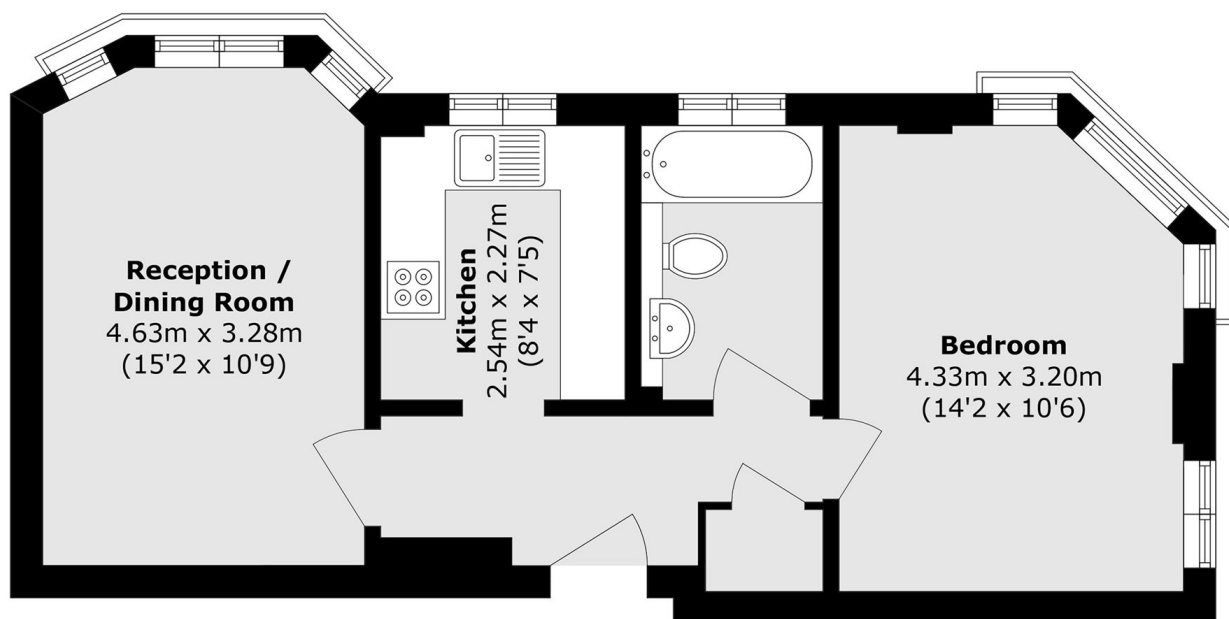
This bright one bedroom purpose built flat has a wonderful living room providing space for both living and dining areas. There is a separate kitchen and good storage throughout. Furthermore there is an allocated parking space, a communal roof terrace and the property is being sold with no onward chain.

This fabulous location is perfect for those seeking a quiet neighbourhood with unrivalled access to transport links including Vauxhall (Victoria and National Rail), Kennington (Northern Line) and Lambeth North (Bakerloo Line). It is also just a short stroll to Vauxhall Gardens, the River Thames and the West End.

Features

- One Bedroom
- Excellent Location
- No Onward Chain
- Allocated Parking Space
- Separate Kitchen
- Good Condition

Vauxhall Walk, London, SE11



Total area (approx.): 45.1 sq. m (485.5 sq. ft)