

## Newburn Street, SE11

### £250,000

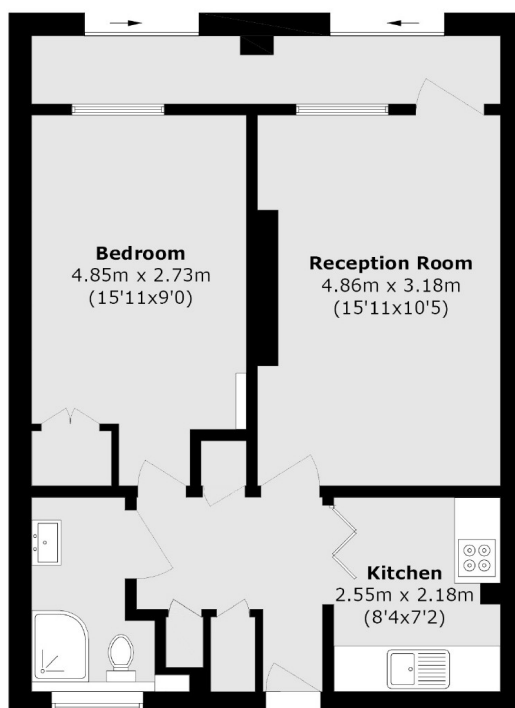
A spacious ground floor, one bedroom purpose built flat. The property benefits from its own private entrance and whilst it does require some updating, it has excellent potential for the next buyer to make it their own. The property benefits from direct access out onto communal gardens and it is being sold with no onward chain.

Newburn Street is incredibly quiet whilst being on the doorstep of Vauxhall and Albert Embankment. You are surrounded by fantastic local pubs, restaurants and coffee shops. From Vauxhall you will find some of the best links in London, offering South West Railway, Northern Line, Victoria Line and various bus services.

### Features

- One Bedrooms
- Purpose Built
- Private Entrance
- Great Potential
- No Onward Chain
- Separate Kitchen

# Newburn Street, London, SE11



Total area (approx.): 52.8 sq. m (568.3 sq. ft)