



Walberswick Street, SW8

£2,300 Per calendar month

A well presented two-bedroom first-floor flat set within this period conversion, offered in excellent condition throughout. The property is furnished and features a bright open-plan kitchen and reception room.

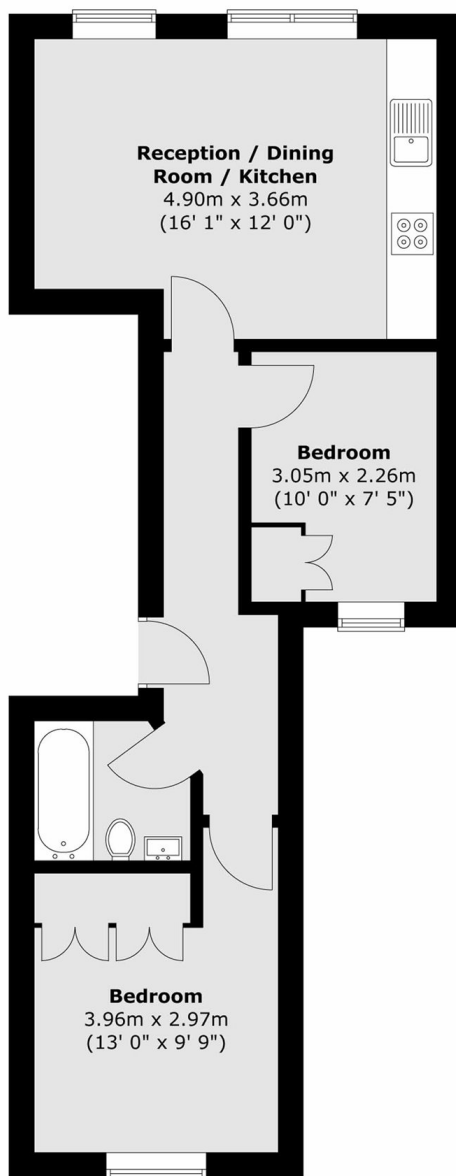
Ideally positioned just off South Lambeth Road, with easy access to the vibrant cafés, delis, and restaurants of Little Portugal. The flat is also perfectly situated for transport links, with Stockwell, Vauxhall, and Nine Elms stations.

Features

- Two Bedrooms
- First Floor Flat
- Open Plan
- Great Location
- Little Portugal
- Close To Tube

Walberswick Street, London, SW8

First Floor



Total area (approx.) : 45.4 sq. m (489 sq. ft)