

Loughborough Road, SW9

£700,000

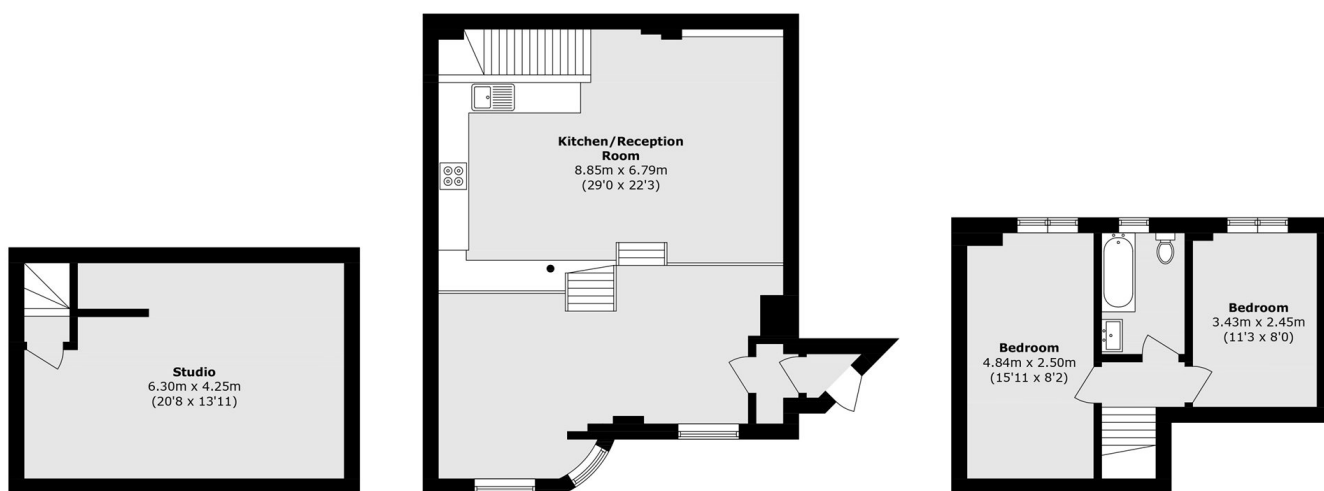
A unique two double bedroom split-level flat set within a beautifully maintained former Victorian pub. With high ceilings, superb entertaining space, and a versatile lower ground floor used as a cinema room and gym, this home is full of character and charm. Benefitting from a share of the freehold, the building is in excellent condition and will soon feature in a new film.

Conveniently positioned within walking distance of Brixton and Stockwell tube stations (Victoria and Northern Lines) as well as Loughborough Junction Overground, the property benefits from excellent transport links. A range of local shops, pubs and independent coffee spots are close at hand, along with the beautiful open spaces of Mayatt's Fields Park.

Features

- Two Double Bedrooms
- Fabulous Living Space
- Excellent Condition
- Character Features
- Share of Freehold
- Great Location

Loughborough Road, London, SW9



Basement

Ground Floor

First Floor

Total area (approx.): 112.5 sq. m (1210.9 sq. ft)