



St. George Wharf, SW8

£3,100 Per calendar month

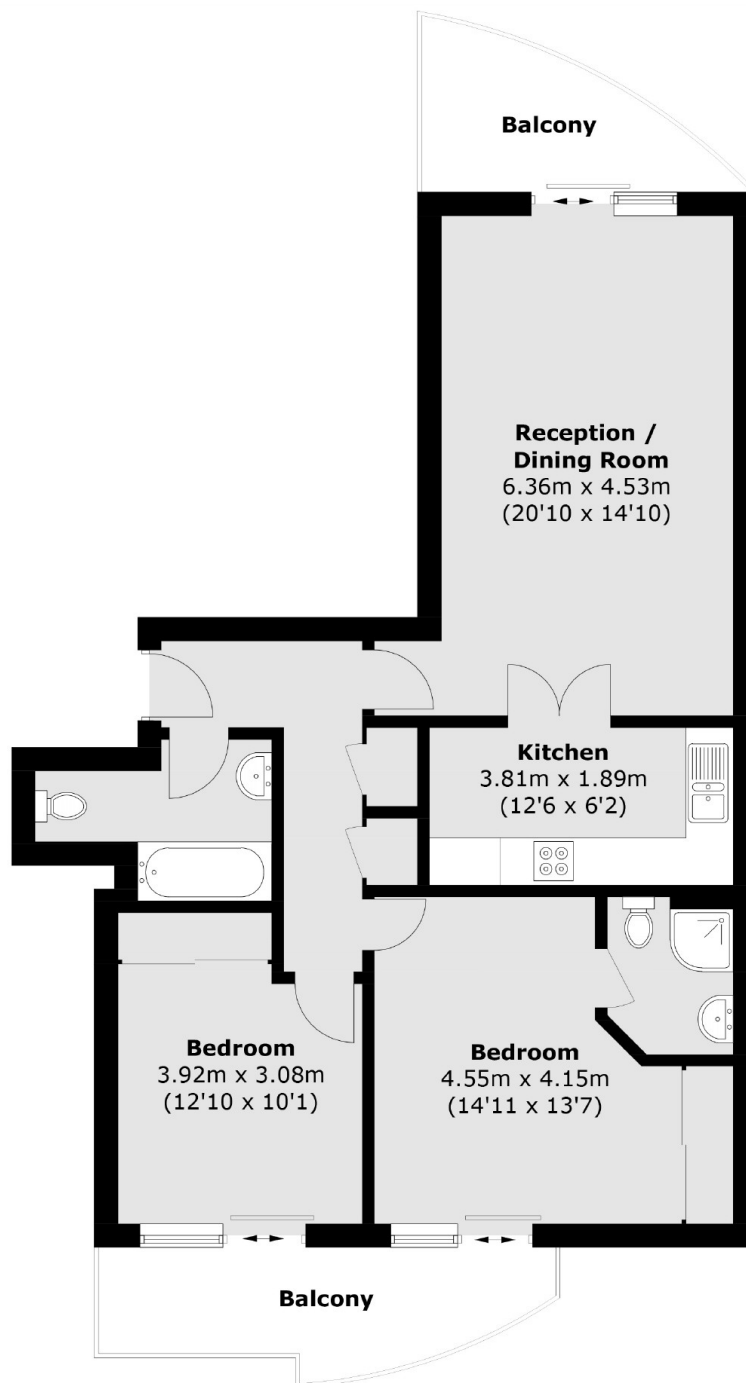
A spacious two double bedroom modern apartment with views over the River Thames, offering two modern bathrooms, two private balconies and an ensuite. The property further benefits with an on-site concierge.

In the popular St George Wharf development on the banks of the Thames this property moments from Vauxhall station (Victoria line) tube and National Rail.

Features

- Two Double Bedrooms
- Two Bathrooms
- Two Balconies
- Private Concierge
- Prime Location
- Local Transportation Links

St. George Wharf, London, SW8



Total area (approx.): 78.1 sq. m (840.7 sq. ft)
Balcony : 13.6 sq. m (146.4 sq. ft)

Dexters

Kennington
181 Kennington Lane
London
SE11 4EZ
Lettings
020 7650 5103

Energy Rating: C. We aim to make our particulars both accurate and reliable. However they are not guaranteed; nor do they form part of an offer or contract. If you require clarification on any points then please contact us, especially if you're traveling some distance to view. Please note that appliances and heating systems have not been tested and therefore no warranties can be given as to their good working order.

 **RICS** | Regulated
Estate Agent
and Letting Agent

dexters.co.uk