



St. George Wharf, SW8

£18,750 Per calendar month

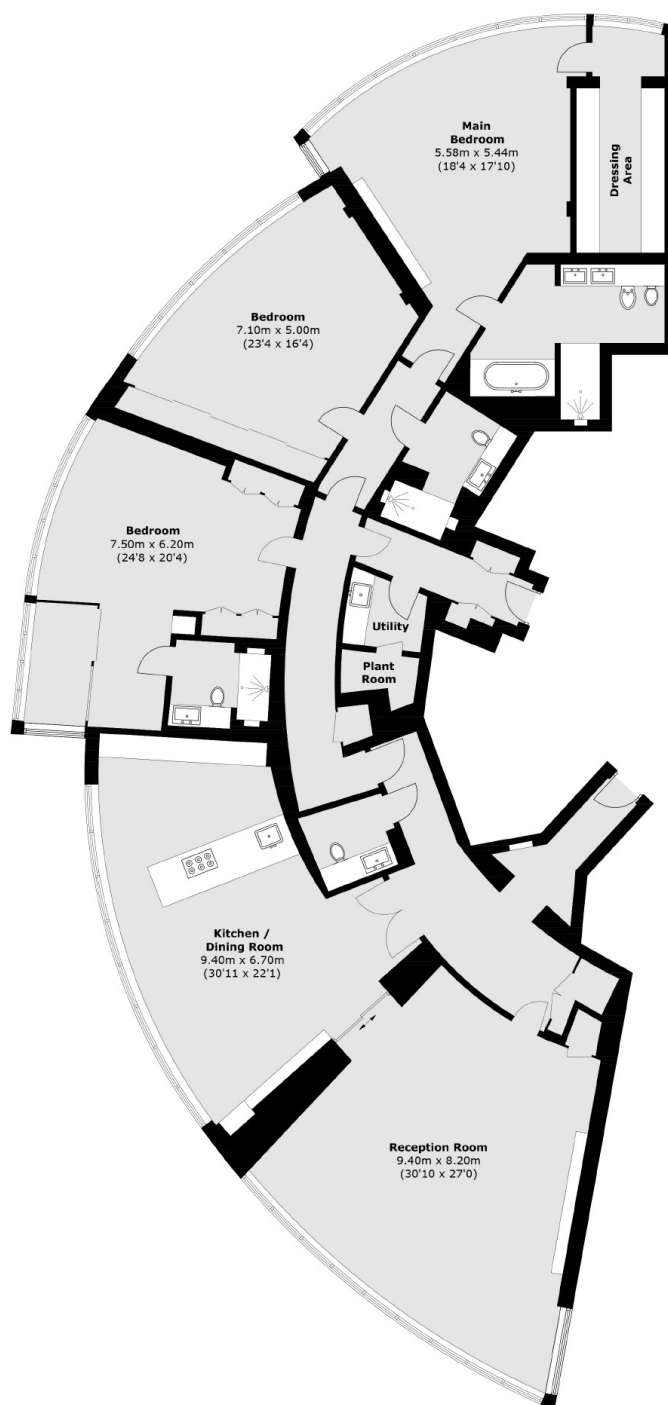
Welcome to an exquisite three bedroom apartment in the prestigious, The Tower at St George Wharf, offering luxury and sophistication. Spanning an impressive 3300 sq. Ft, this residence boasts modern elegance and breathtaking views of the River Thames.

Situated in the vibrant and sought-after area of St George Wharf, The Tower offers easy access to Battersea Power Station where there is a wealth of local amenities, including fine dining restaurants, chic cafés, and boutique shops. Excellent transport links are nearby, providing quick connections to the rest of London.

Features

- Luxurious Development
- River Views
- Over 3300 Sq.Ft
- Elegant Living Area
- Gourmet Kitchen
- High-End Amenities

St. George Wharf, London, SW8



Total area (approx.): 312.1 sq. m (3,360.0 sq. ft)

Dexters

Kennington
181 Kennington Lane
London
SE11 4EZ
Lettings
020 7650 5103

Energy Rating: B. We aim to make our particulars both accurate and reliable. However they are not guaranteed; nor do they form part of an offer or contract. If you require clarification on any points then please contact us, especially if you're traveling some distance to view. Please note that appliances and heating systems have not been tested and therefore no warranties can be given as to their good working order.

 **RICS** | Regulated
Estate Agent
and Letting Agent

[dexters.co.uk](https://www.dexters.co.uk)