

Andrews Walk, SE17

£535,000

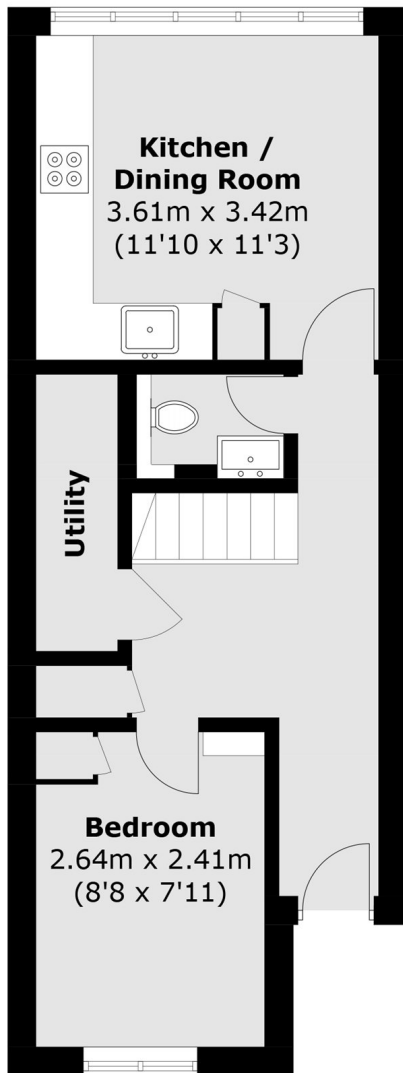
A quality three bedroom split level purpose built flat at over 994 sq.ft, benefitting from direct access onto a private terrace. The property is in exceptional condition throughout enjoying a separate kitchen/diner boasting a timeless shaker style kitchen. There are two double double bedrooms and a third single bedroom all of which benefit from built in wardrobes. Furthermore there is a stylish bathroom and a separate w/c. Sold with no onward chain.

Andrews Walk is conveniently located within walking distance of Oval and Kennington tube stations (Northern Line) There is easy access to Camberwell, the Walworth Road and Elephant and Castle offering a wide selection of bars, restaurants and shops.

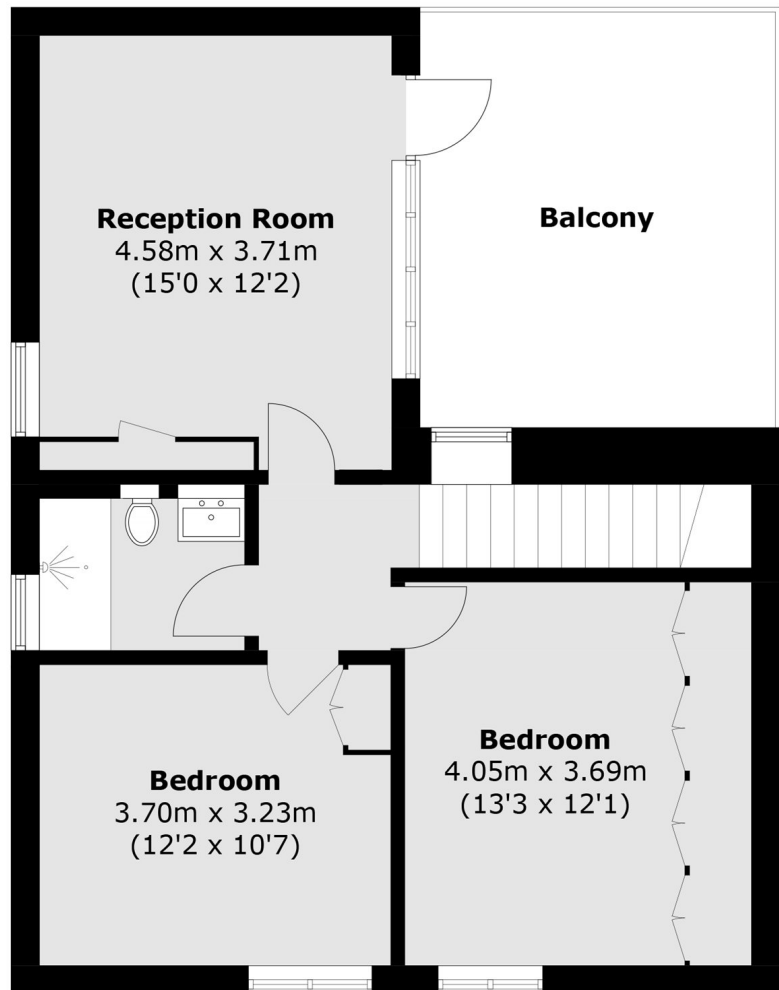
Features

- Split Level
- Three Bedrooms
- 994sq.ft
- Private Terrace
- Excellent Condition
- No Onward Chain

Andrews Walk, London, SE17



First Floor



Second Floor

Total area (approx.): 92.4 sq. m (994.5 sq. ft)
Balcony: 16.4 sq. m (176.5 sq. ft)