

Fentiman Road, SW8

£699,950

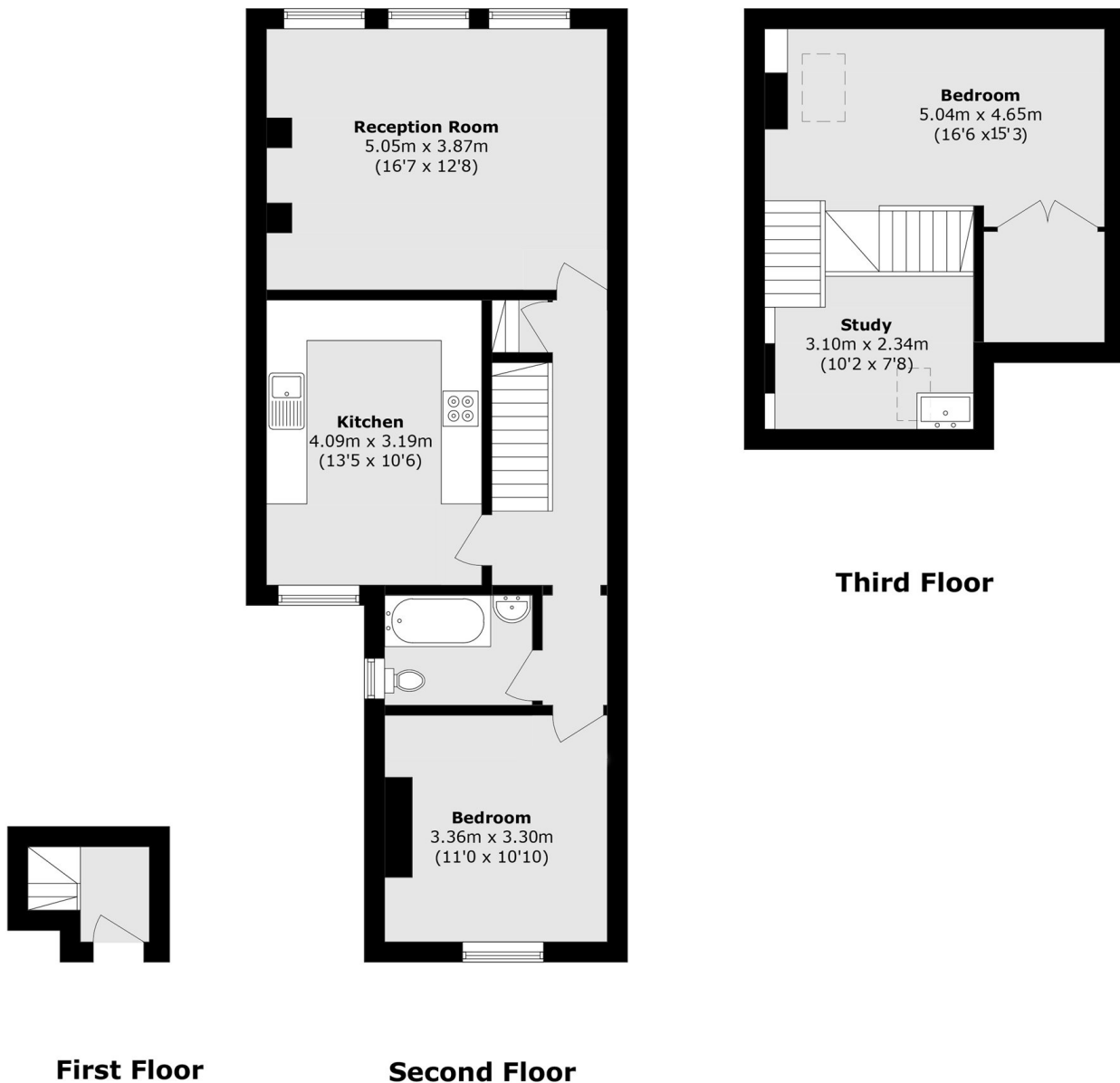
A beautifully presented split-level Victorian home offering two double bedrooms and a long lease.. This bright and characterful property benefits from impressive high ceilings and large sash windows throughout. The standout reception room enjoys leafy views over Vauxhall Park and provides ample space for both relaxing and dining, making it ideal for entertaining. A separate, well-proportioned kitchen/breakfast room offers excellent worktop space and is perfect for keen cooks. The home has been exceptionally well maintained and features a unique split-level double bedroom with built-in storage and dedicated space for working from home. Offered in good condition throughout and sold with no onward chain.

Fentiman Road is beautiful tree lined street, within a low traffic conservation zone, perfectly positioned within walking distance of fantastic schools local amenities including the Fentiman and Canton Arms pubs, shops and cafes. There are unbeatable transport links including Nine Elms, Stockwell and Vauxhall Stations just a short walk away.

Features

- Two Double Bedrooms
- Split Level
- Excellent Views
- Wonderful Location
- Long Lease
- No Onward Chain

Fentiman Road, London, SW8



Total area (approx.): 88.7 sq. m (954.7 sq. ft)

Dexters

Kennington
181 Kennington Lane
London
SE11 4EZ
Sales
020 7650 5102

Energy Rating: E. We aim to make our particulars both accurate and reliable. However they are not guaranteed; nor do they form part of an offer or contract. If you require clarification on any points then please contact us, especially if you're traveling some distance to view. Please note that appliances and heating systems have not been tested and therefore no warranties can be given as to their good working order.

 **RICS** | Regulated
Estate Agent
and Letting Agent

[dexters.co.uk](https://www.dexters.co.uk)