



## Winchester Close, SE17

### £369,950

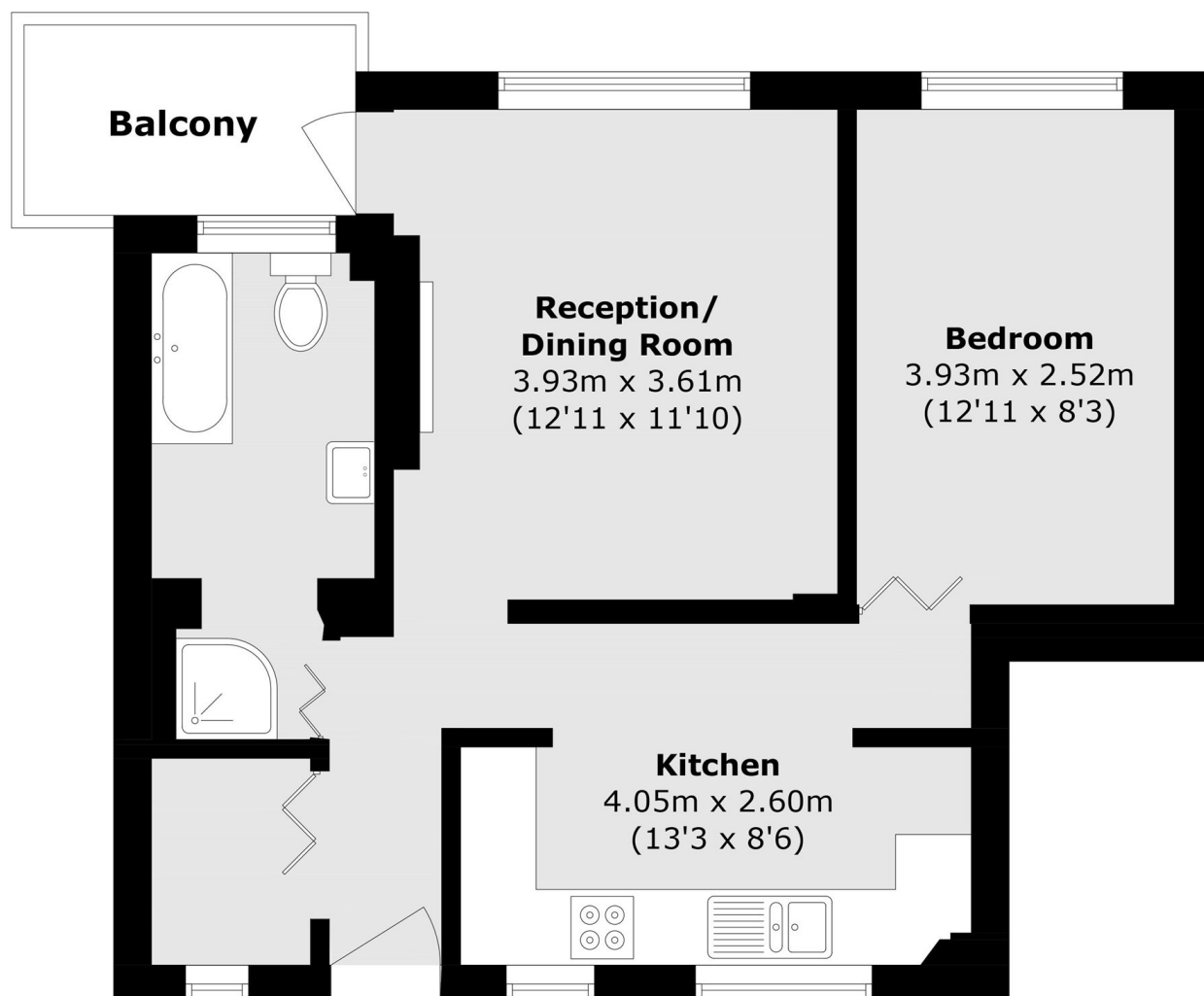
A lovely first-floor, one-bedroom purpose-built flat presented in excellent condition throughout. The property features a spacious reception room with direct access to a private balcony, creating a bright and inviting living space. There is a modern, well-proportioned kitchen offering ample worktop space, alongside a generous family bathroom fitted with both a separate shower and a bathtub. Excellent storage is available throughout the property, enhancing its practicality and appeal.

Quietly tucked away within easy reach of Elephant and Castle and Kennington, benefitting from excellent access to transport available (Northern, Bakerloo and National Rail). There is a great deal of choice when it comes to restaurants, coffee shops and bus links.

### Features

- One Bedroom
- Purpose Built
- Healthy Lease
- Balcony
- Excellent Location
- Well Proportioned

# Winchester Close, London, SE17



Total area (approx.): 48.5 sq. m (522.0 sq. ft)

Balcony area (approx.): 3.9 sq. m (41.9 sq. ft)