



## Vauxhall Grove, SW8

£2,600 Per calendar month

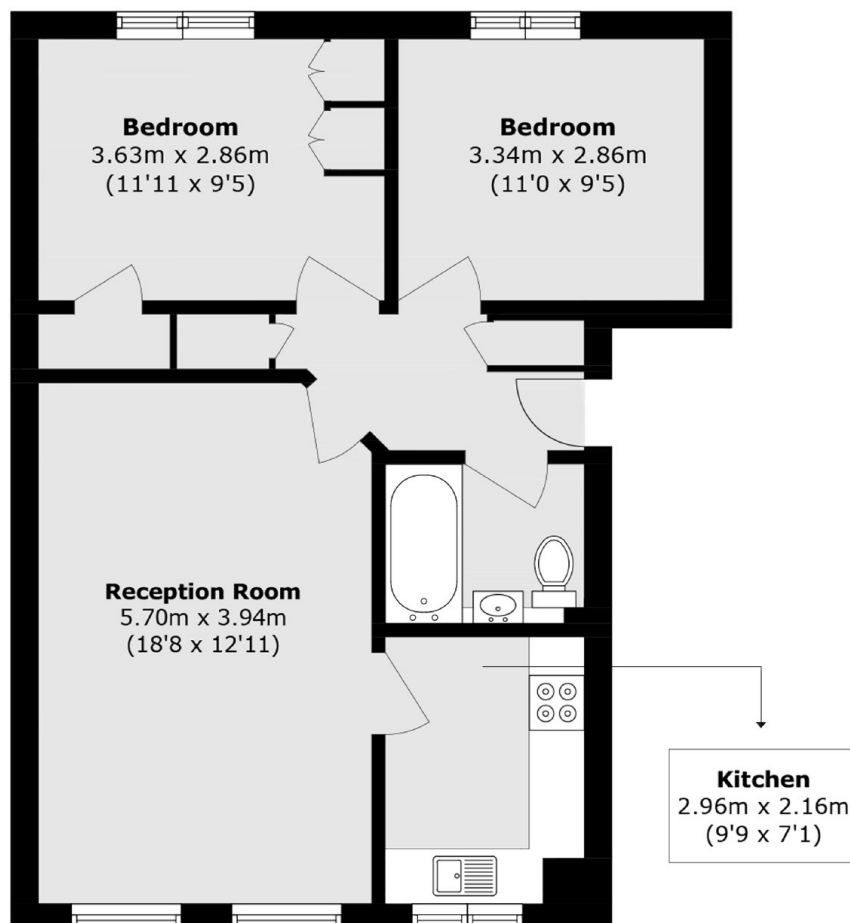
Two double bedroom flat in this secure modern block, conveniently located within Vauxhall. The apartment is finished to a high standard including a white gloss kitchen, spacious reception room and modern bathroom. This is ideal for a couple or two working professionals.

Conveniently located close to the centre of Vauxhall with many restaurants and cafés nearby. The popular Bonnington Square is just round the corner.

### Features

- Two Double Bedrooms
- Parking Space
- Large Reception Room
- Modern Bathroom
- White Gloss Kitchen
- Furnished

# Vauxhall Grove, London, SW8



Total area (approx.): 60.1 sq. m (646.9 sq. ft)