



Aylesbury Road, SE17

£725,000

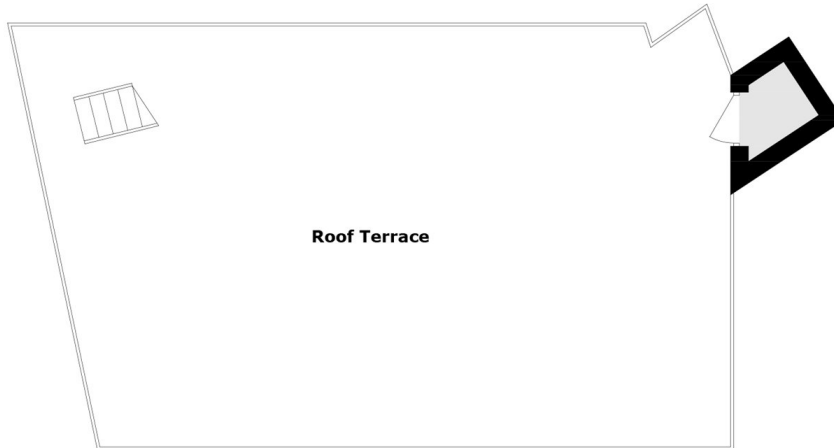
A remarkable three bedroom split-level home set within a fascinating converted Tudor public house. Arranged over the ground and lower-ground floors, this unique property extends to 1,252 sq.ft and offers an abundance of living space, two well-appointed bathrooms, and access to a generous private roof terrace. Rich in character and charm, the home has been thoughtfully maintained and is presented in excellent condition throughout, ready for the next owners to make it their own.

Peacefully located on Aylesbury Road only a short walk away from Elephant and Castle, arguably one of the most exciting areas, with its rapid growth and vast array of local trendy amenities. Access to Northern and Bakerloo Lines provide easy access into the City and the West End.

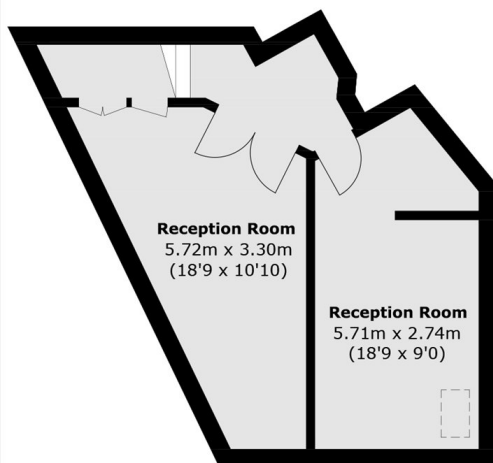
Features

- Share of Freehold
- Three Bedrooms
- No Onward Chain
- Character Features
- Private Entrance
- Quiet Location

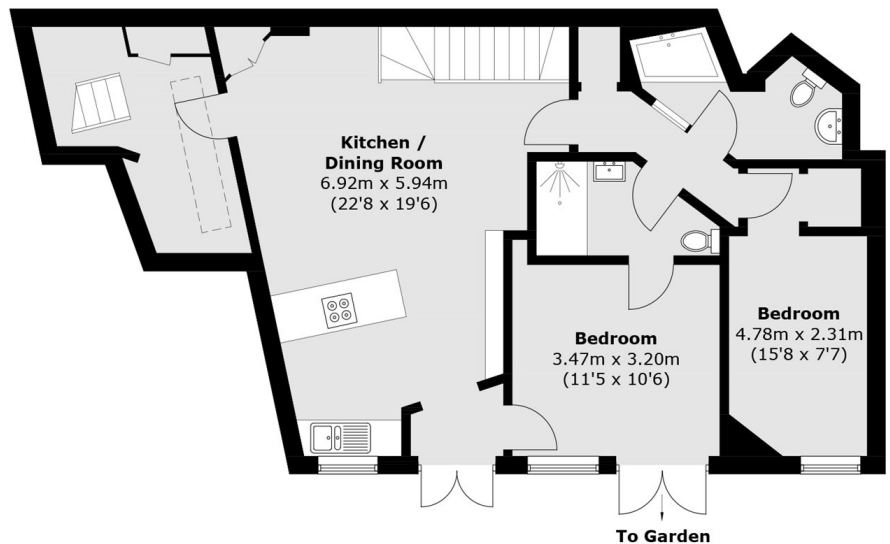
Aylesbury Road, London, SE17



First Floor



Basement



Ground Floor

Total area (approx.): 116.5 sq. m (1,252.0 sq. ft)
Roof Terrace: 79.2 sq. m (852.5 sq. ft)