



Prima Road, SW9

£575,000

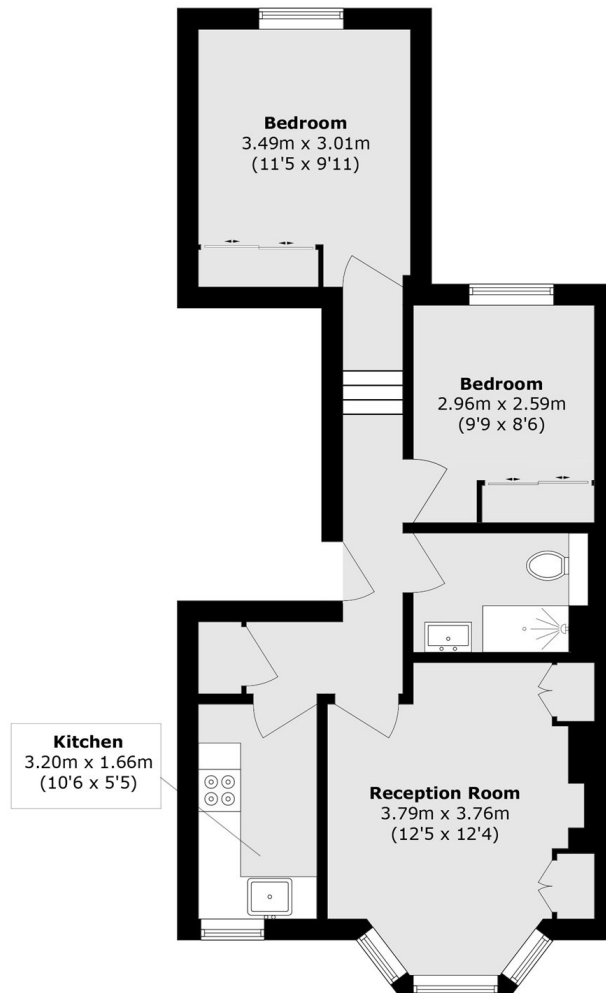
A gorgeous two double bedroom first floor Victorian conversion in fabulous condition throughout. This charming home has a lovely bay fronted reception room with exposed wooden floors and beautiful sash windows. The separate kitchen is stylish in design and has plenty of work top space, perfect for those who love to cook and entertain. The two bedrooms are served by a newly finished bathroom. Furthermore there is a good amount of storage and a share of the freehold.

Prima Road is just moments from Oval Underground Station (Northern Line) this wonderful location, neighbours St Mark's Church and Kennington Park. There are fantastic transport links and a number of local shops and cafés close by including the popular farmers market held on a Saturday

Features

- Two Double Bedrooms
- Excellent Condition
- Share of Freehold
- Great Location
- Character Features
- Separate Kitchen

Prima Road, London, SW9



Total area (approx.): 52.5 sq. m (565.1 sq. ft)