



Boyson Road, SE17

£370,000

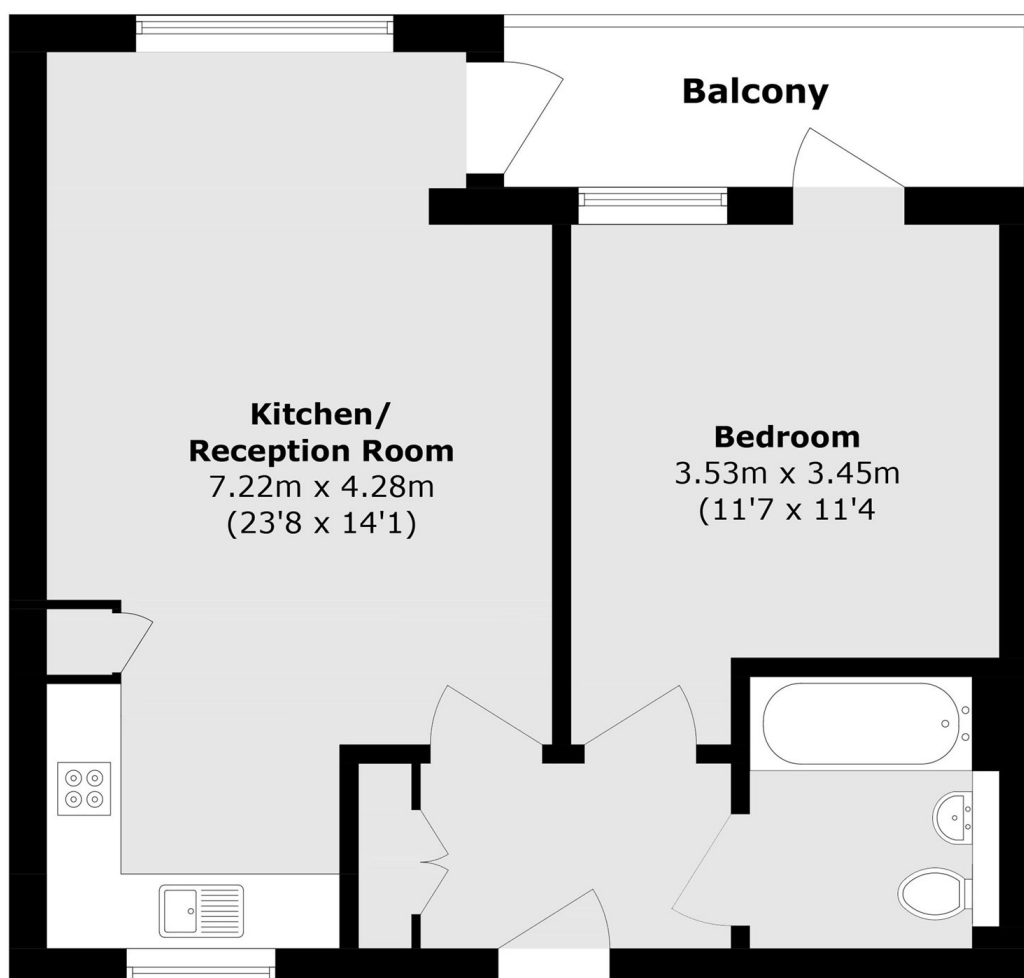
A well-presented, modern one-bedroom apartment maintained to an excellent standard throughout. Enjoying a south-facing aspect, the property boasts a bright open-plan living space ideal for entertaining, along with direct access to a private balcony, ample storage, and the benefit of no onward chain.

Roffo Court is peacefully situated just off Walworth Road, offering convenient access to Elephant & Castle mainline and tube stations (Northern & Bakerloo Lines). A wide selection of local shops, restaurants, and coffee spots are nearby, along with the lush greenery of Burgess Park. This location is ideal for busy commuters, with frequent bus connections in all directions.

Features

- One Bedroom
- South Facing Views
- Private Balcony
- Open Plan Living
- No Onward Chain
- Great Condition

Boyson Road, London, SE17



Total area (approx.): 49.4 sq. m (531.7 sq. ft)

Balcony area (approx.): 6.3 sq. m (67.8 sq. ft)