



South Lambeth Road, SW8

£699,000

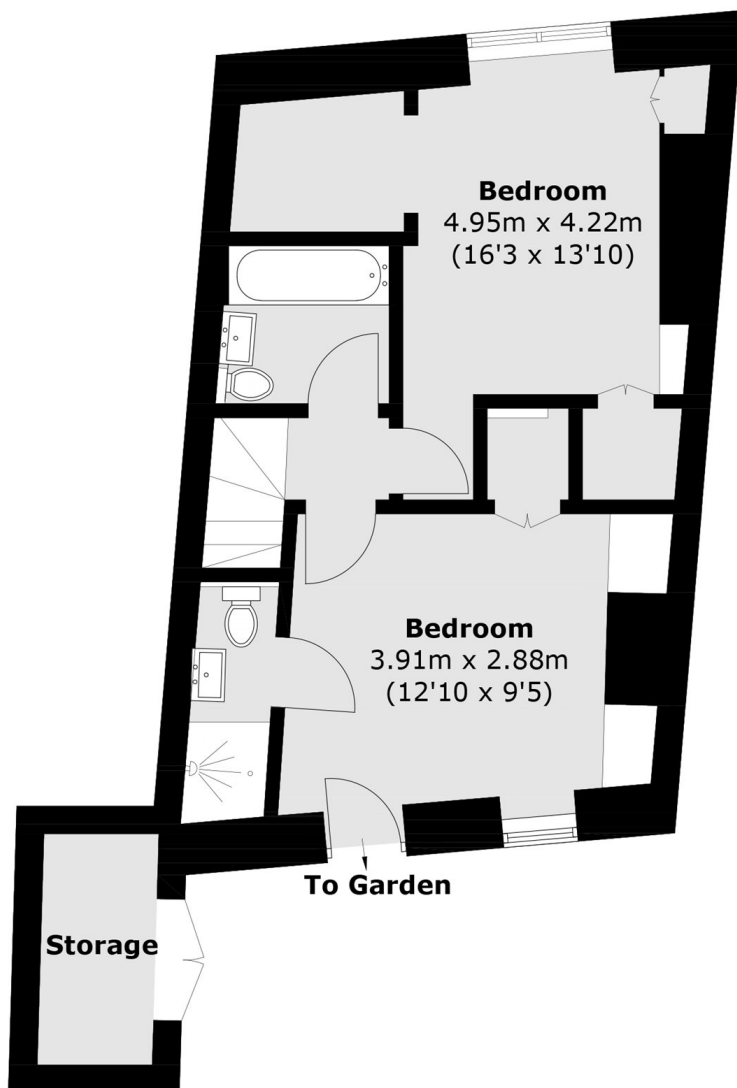
A beautifully finished two-bedroom, two-bathroom period home arranged over the ground and lower ground floors. Benefitting from its own private entrance, this charming property offers a wonderful open plan reception room flooded with natural light, seamlessly combining with a high specification kitchen to create a fantastic sociable space, perfect for those who love to entertain. On the lower ground floor, the principal bedroom is positioned to the front and features an en-suite shower room along with direct access to the front garden area. The second bedroom, located to the rear, is served by a stylish family bathroom. Presented in excellent condition throughout, the property is ready for its next owner to move straight in and enjoy. It also retains many attractive period features, including high ceilings and large sash windows, enhancing its character and sense of space.

Perfectly located and set back on South Lambeth Road in the heart of Little Portugal, this property is just moments from a fantastic selection of casual restaurants, local shops, and the renowned The Canton Arms. The area offers excellent transport links, with numerous bus routes and easy access to Vauxhall Station, Nine Elms Station, and Stockwell Station, ensuring convenient connections across London.

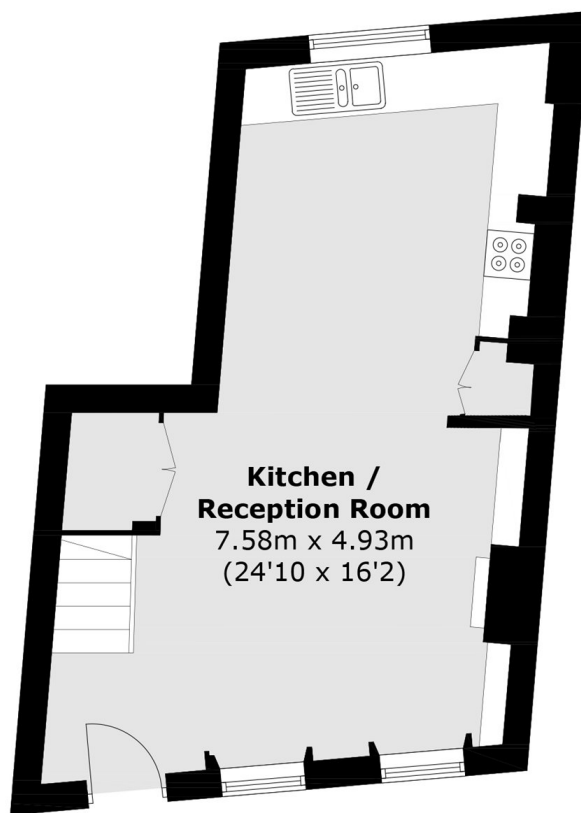
Features

- Two Bedrooms
- Character Features
- Excellent Condition
- Great Location
- Split Level
- Two Bathrooms

South Lambeth Road, London, SW8



Lower Ground Floor



Ground Floor

Total area (approx.) 70.8 sq. m (762 sq. ft)
External Storage : 3 sq. m (32 sq. ft)