

Grosvenor Terrace, SE5

£565,000

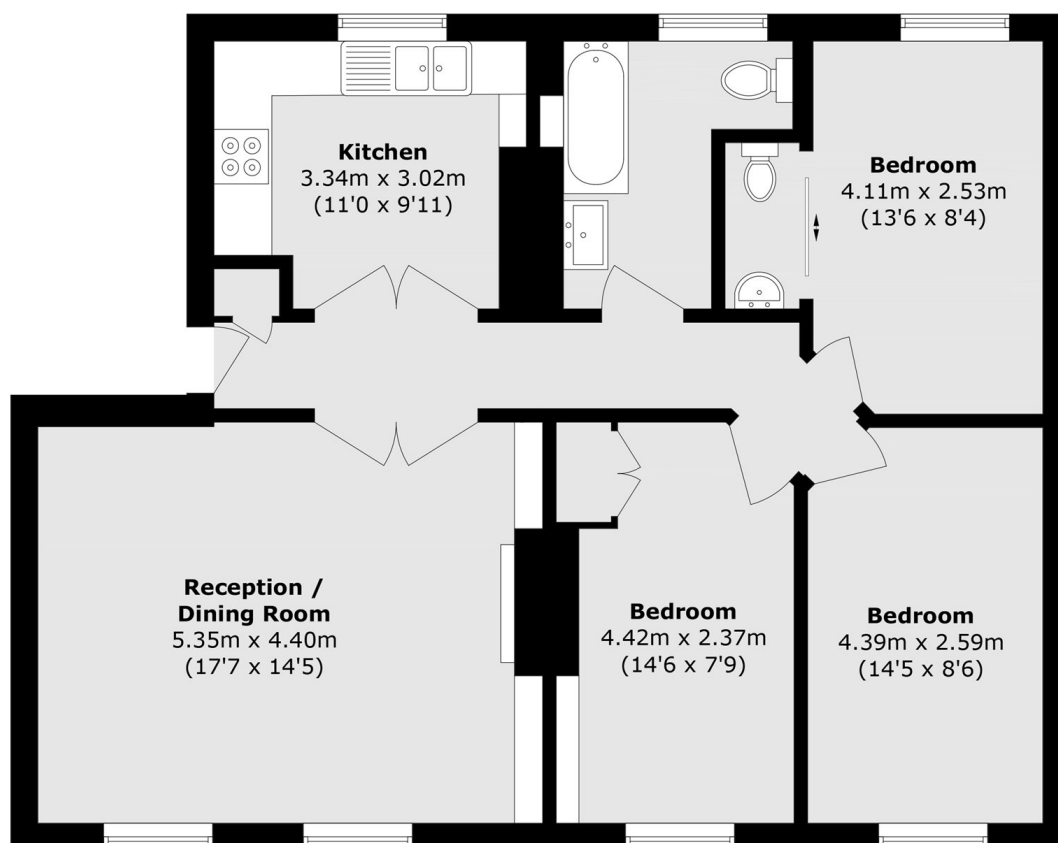
A fantastic three bedroom first floor character home in good condition throughout. Flooded with natural light, the property has a spacious reception room providing space for both living and dining areas. The principal bedroom has access to a w/c in addition to the separate bathroom. Furthermore there is plenty of storage, a healthy lease and access to a shared garden.

Grosvenor Terrace is located in between two fantastic parks in Burgess Park and Kennington Park. Walking distance from Kennington and Oval tube stations (Northern Line). Close by is a vast array of trendy local amenities which provide a real hub of activity for the local community.

Features

- Three Bedrooms
- Excellent Location
- 938sq.ft
- Communal Garden
- First Floor
- Separate W/C

Grosvenor Terrace, London, SE5



Total area (approx.): 87.2 sq. m (938.6 sq. ft)