



Frean Street, SE16

£623 Per week

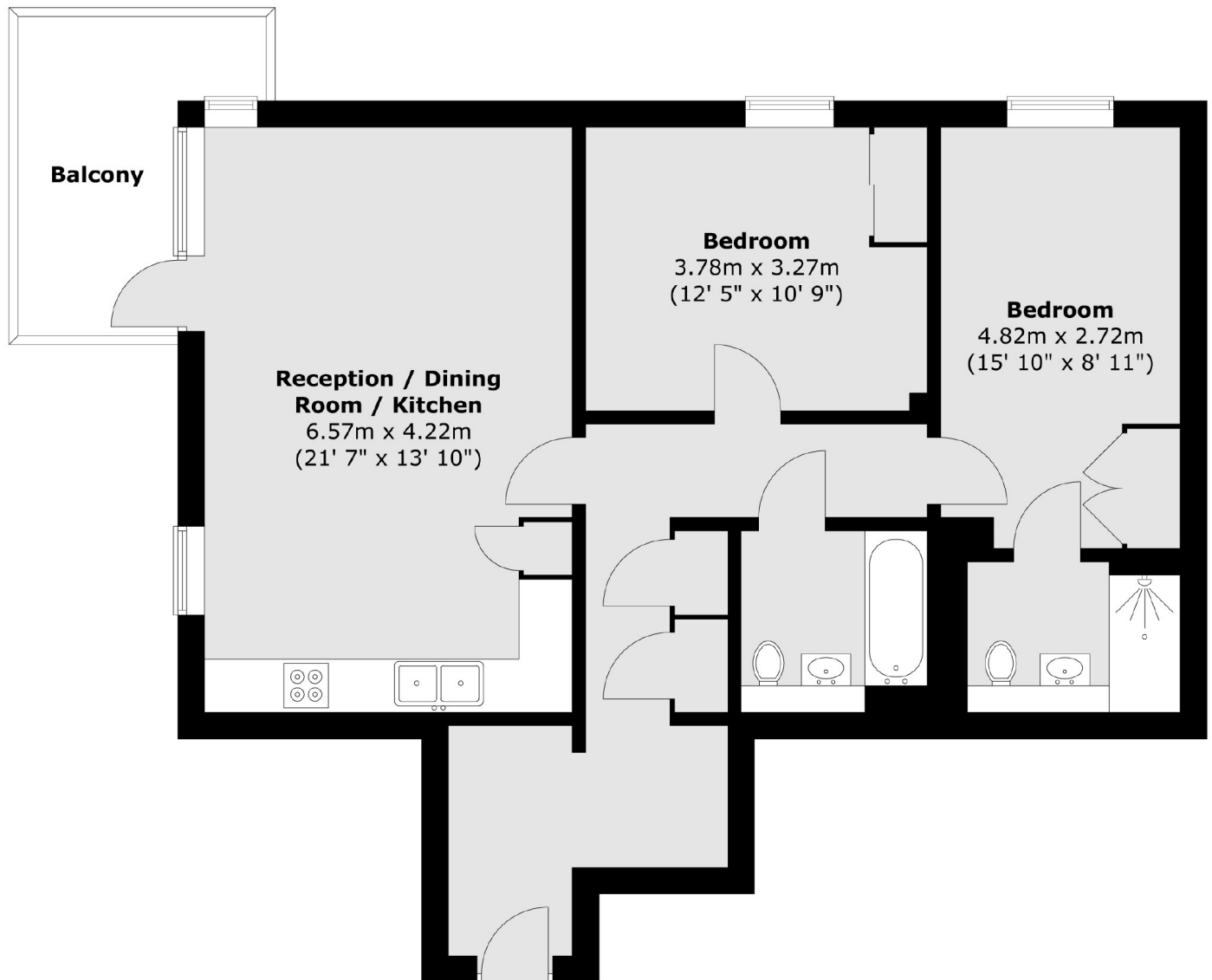
Situated moments from Bermondsey Station, this two double bedroom flat is in fantastic condition and has a large open plan kitchen living space, private balcony, ample storage and lots of natural light.

Prospect House is less than 0.2 miles from the Jubilee Line which gives easy access to the city and Canary Wharf. Maltby Street Market is close by, as is Shad Thames and Bermondsey Street.

Features

- Two Double Bedrooms
- Two Bathrooms
- Balcony
- Furnished
- Jubilee Line
- Bermondsey

Frean Street, London, SE16



Total area (approx.) : 79.8 sq. m (859 sq. ft)
Total balcony area (approx.) : 7.4 sq. m (80 sq. ft)

Dexters

Tower Bridge
50 Shad Thames
London
SE12LY
Lettings
0207 650 5105

Energy Rating: B. We aim to make our particulars both accurate and reliable. However they are not guaranteed; nor do they form part of an offer or contract. If you require clarification on any points then please contact us, especially if you're traveling some distance to view. Please note that appliances and heating systems have not been tested and therefore no warranties can be given as to their good working order.

 **RICS** | Regulated
Estate Agent
and Letting Agent

dexters.co.uk