



St. James's Road, SE1

£369 Per week

A one bedroom property in a warehouse conversion with high ceilings, exposed brick and wood flooring. The property also offers open plan living, a private communal courtyard and bike storage.

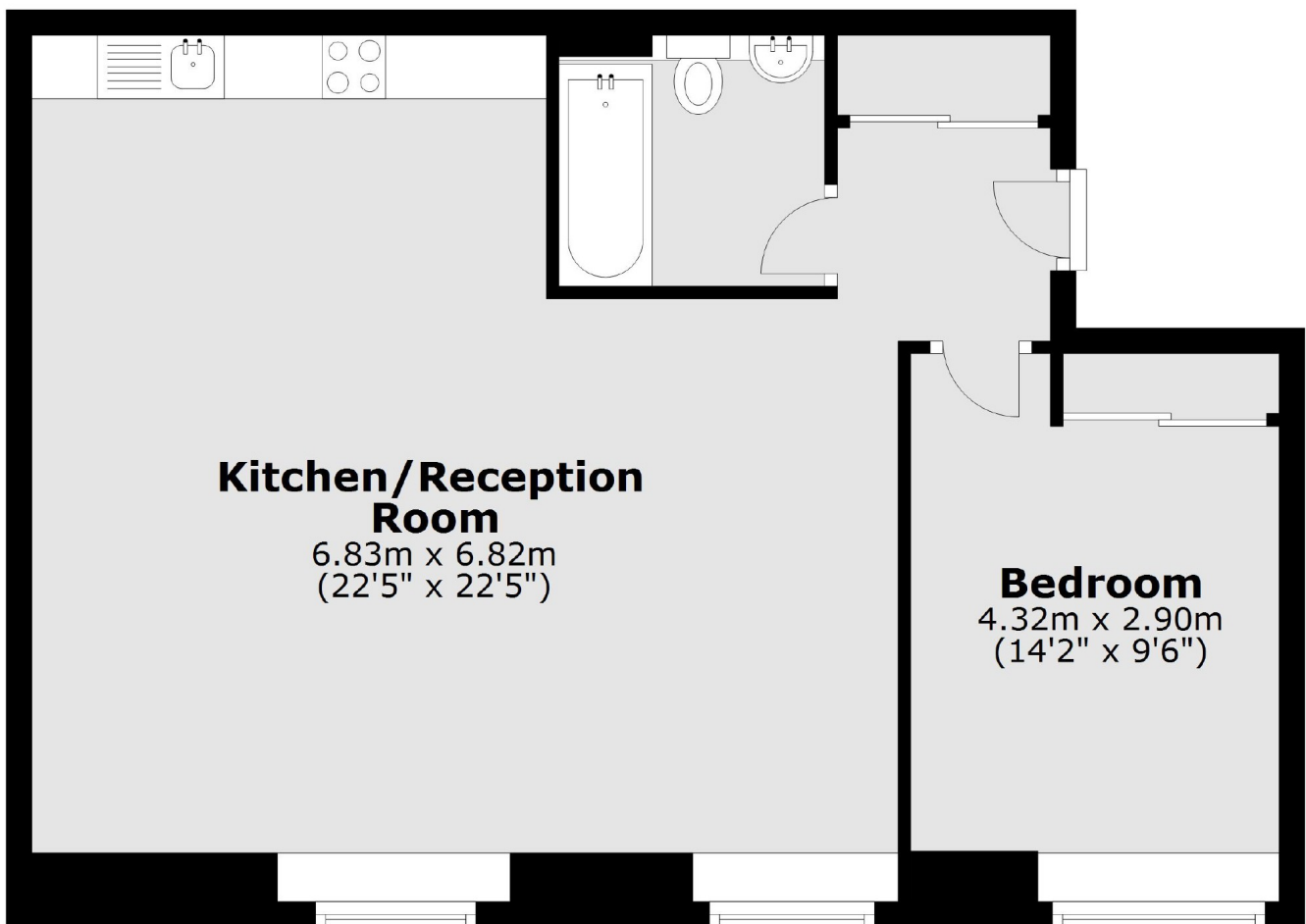
Chevron Apartments is very well located to shops, supermarkets and amenities. Southwark Park and Burgess Park are both nearby, along with Bermondsey tube and South Bermondsey, taking you to London Bridge in five minutes.

Features

- One Double Bedroom
- Warehouse Conversion
- Exposed Brick
- Furnished
- Bermondsey
- Communal Courtyard

St. James's Road,
London, SE1

Ground Floor



Total area: approx. 62.6 sq. metres (673.3 sq. feet)

Contact

To arrange a viewing call our office on the number below or visit our website.



Energy Rating: . We aim to make our particulars both accurate and reliable. However they are not guaranteed; nor do they form part of an offer or contract. If you require clarification on any points then please contact us, especially if you're traveling some distance to view. Please note that appliances and heating systems have not been tested and therefore no warranties can be given as to their good working order.