



Three Oak Lane, SE1

£2,600 Per week

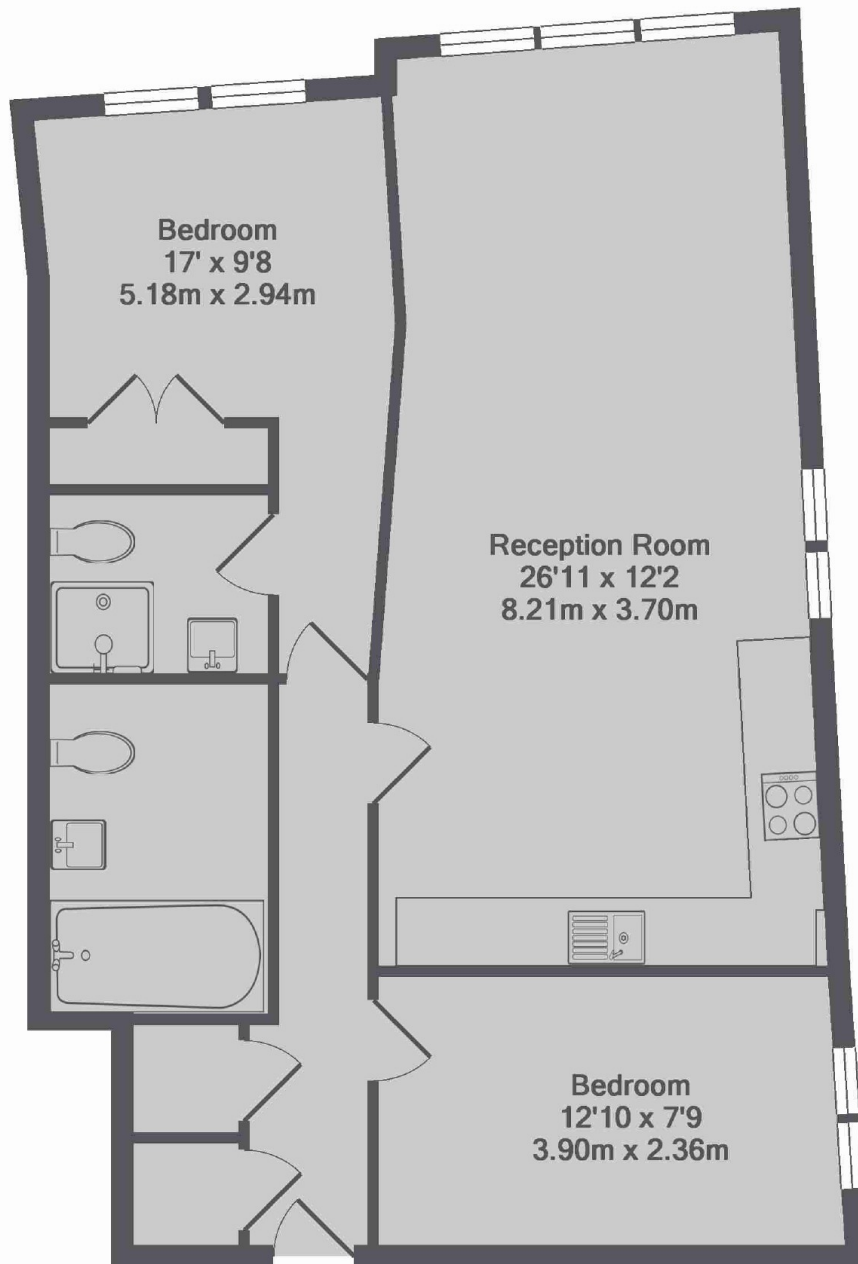
A smart and stylish ground floor two double bedroom, two bathroom apartment available to let in the heart of Shad Thames. Ideal for a family or professional sharers.

Coopers Lodge is an upmarket development in the heart of Shad Thames. The property is just moment from the river front where there are numerous restaurants and bars to choose from. Easy access to London Bridge and Bermondsey Stations.

Features

- Two Double Bedrooms
- Two Bathrooms
- Wood Flooring
- Furnished
- Ground Floor
- Resident's Gym

Three Oak Lane,
London, SE1



Coopers Lodge, SE1
Total Approx. Floor Area 67.0 Sq.M. (721 Sq.Ft.)

Dexters

Tower Bridge
50 Shad Thames
London
SE1 2LY
Lettings
0207 650 5105

Energy Rating: D. We aim to make our particulars both accurate and reliable. However they are not guaranteed; nor do they form part of an offer or contract. If you require clarification on any points then please contact us, especially if you're traveling some distance to view. Please note that appliances and heating systems have not been tested and therefore no warranties can be given as to their good working order.

RICS | Regulated
Estate Agent
and Letting Agent

dexters.co.uk