

West Hampstead, NW6

£500 Per week

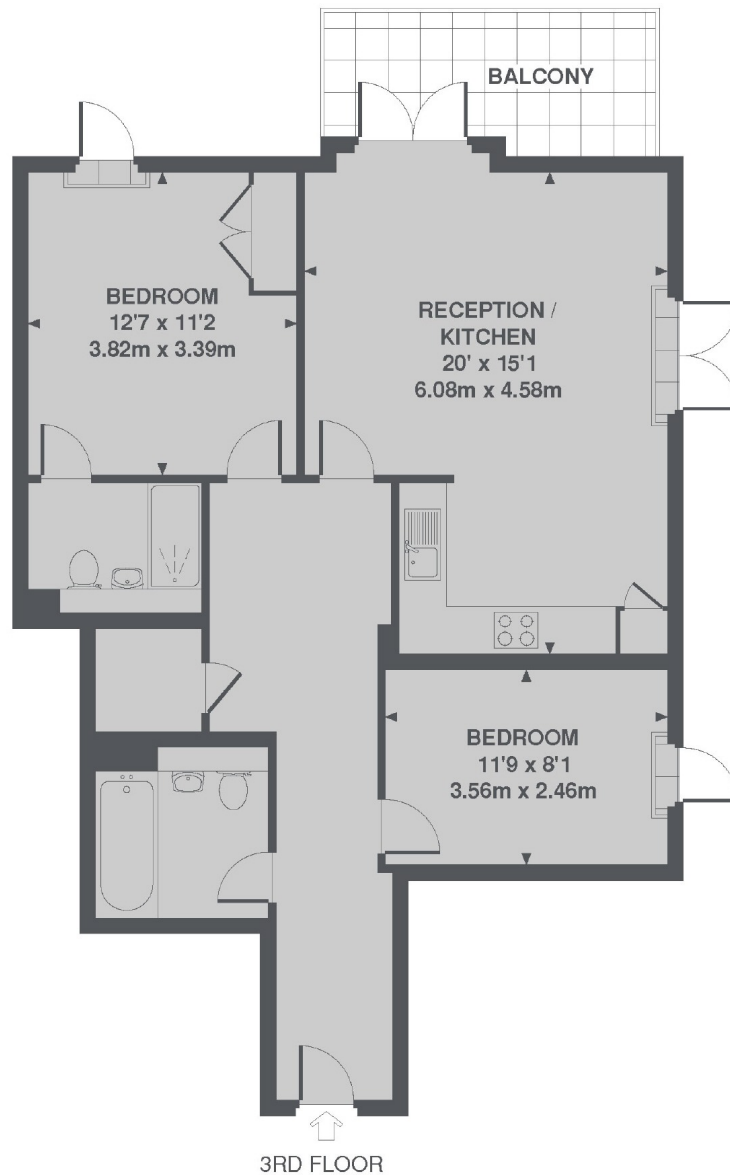
Set in this brand new portered development is a fantastic two bedroom, two bathroom apartment with a terrace. The apartment is finished to the highest of standards with wood floors and modern fittings.

Located between West End Lane and Kilburn High Road with fantastic access to the transport links of the Jubilee line and overground stations, as well as the shopping and dining options of both areas.

Features

- Two Bedrooms
- Two Bathrooms
- Private Terrace
- New Development
- Wood Floors
- Modern Fittings

Maygrove Road, London, NW6



TOTAL APPROX. FLOOR AREA 800 SQ. FT. (74.3 SQ. M.)

Contact

To arrange a viewing call our office on the number below or visit our website.



Energy Rating: B. We aim to make our particulars both accurate and reliable. However they are not guaranteed; nor do they form part of an offer or contract. If you require clarification on any points then please contact us, especially if you're traveling some distance to view. Please note that appliances and heating systems have not been tested and therefore no warranties can be given as to their good working order.