



Grosvenor Road, SW1V

£2,100,000

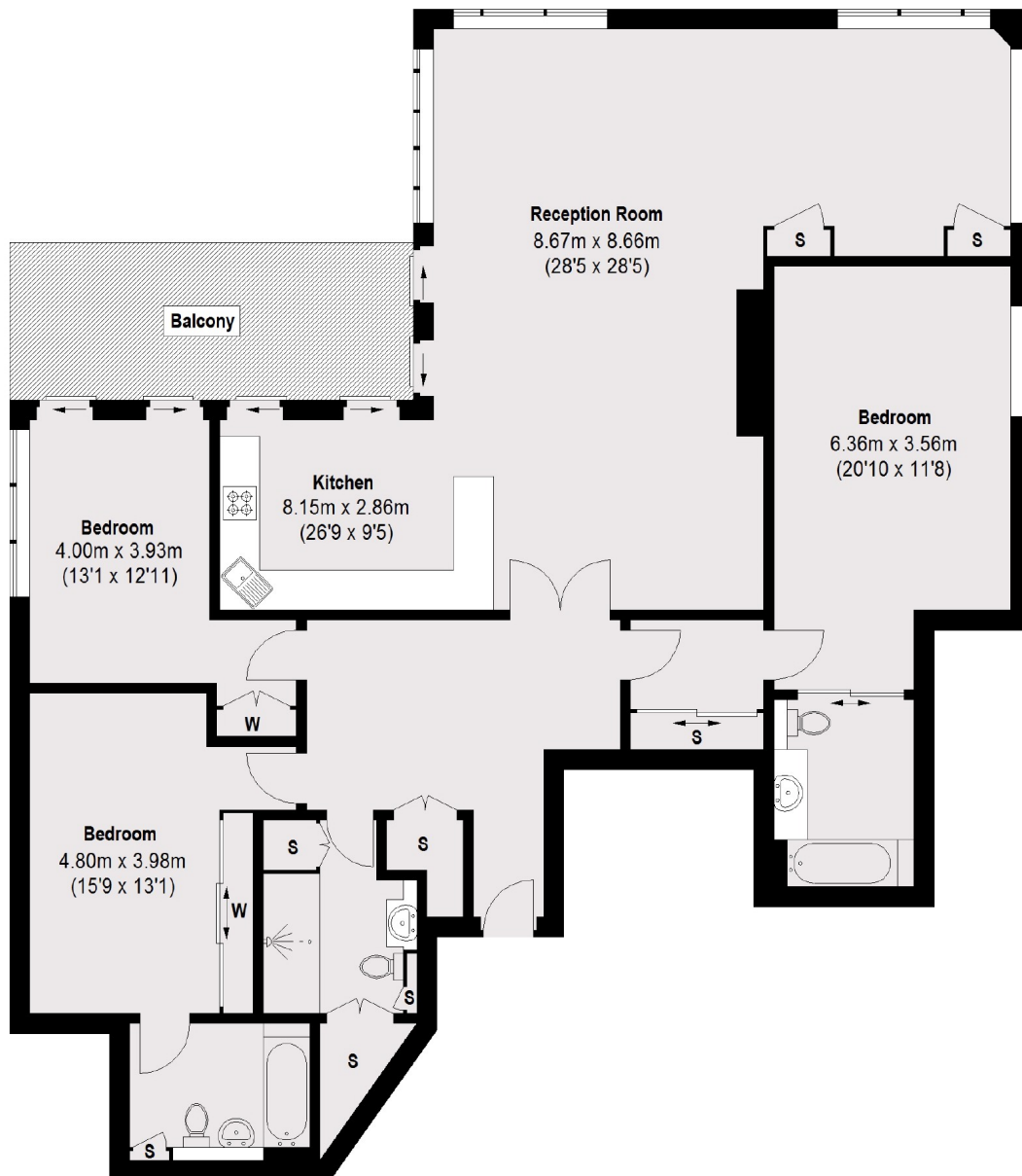
A smart and well presented three double bedroom flat with views directly over the River Thames. Situated on the third floor, with lift, in a well maintained portered development.

Crown Reach is ideally located beside the River, transport links are close by from Vauxhall and Pimlico Stations in addition to the amenities of Pimlico.

Features

River Views
Three Bedrooms
Terrace
Third Floor
Concierge
Residents Parking

Grosvenor Road, London, SW1V



Third Floor

Total area (approx.): 161.45 sq. m (1738 sq. ft)
Balcony: 14.22 sq. m (153 sq. ft)

Contact

To arrange a viewing call our office on the number below or visit our website.



Energy Rating: C. We aim to make our particulars both accurate and reliable. However they are not guaranteed; nor do they form part of an offer or contract. If you require clarification on any points then please contact us, especially if you're traveling some distance to view. Please note that appliances and heating systems have not been tested and therefore no warranties can be given as to their good working order.