



Vincent Street, SW1P

£695,000

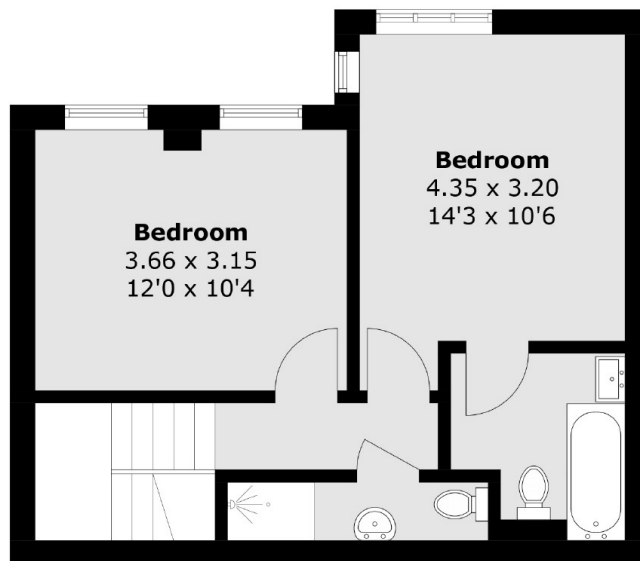
A beautifully presented split-level apartment comprising of two double bedrooms, two bathrooms, separate kitchen and living area, conveniently located near Vincent Square. This property boasts plenty of natural light, its own private balcony, and a communal terrace.

Transport links to St. James's Park, Westminster, Victoria, and Pimlico are excellent. Additionally, there is a wide variety of shops and restaurants on Victoria Street.

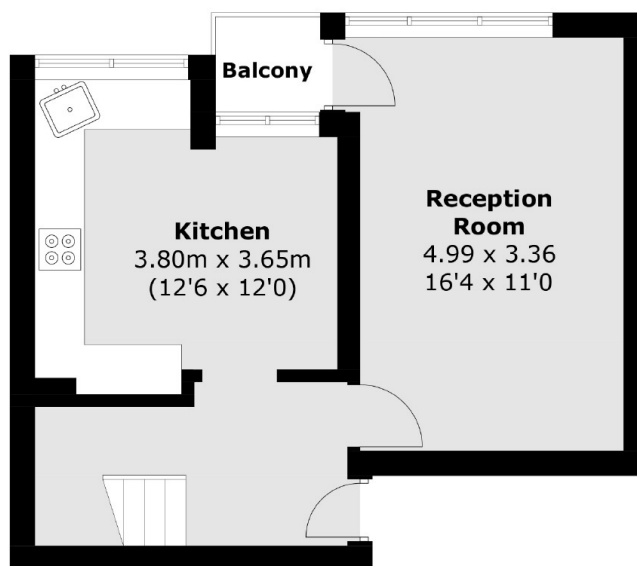
Features

- Close To Transport Links
- Two Double Bedrooms
- Communal Terrace
- Split Level
- Balcony
- Lift

Vincent Street,
London, SW1P



Fifth Floor



Fourth Floor

Total area (approx.): 75.7 sq. m (814.8 sq. ft)
Balcony : 1.4 sq. m (15.0 sq. ft)

Dexters

Westminster
50 Churton Street
London
SW1V 2LP
Sales
020 7590 9570

Energy Rating: C. We aim to make our particulars both accurate and reliable. However they are not guaranteed; nor do they form part of an offer or contract. If you require clarification on any points then please contact us, especially if you're traveling some distance to view. Please note that appliances and heating systems have not been tested and therefore no warranties can be given as to their good working order.

 **RICS** | Regulated
Estate Agent
and Letting Agent

dexters.co.uk