



## Victoria Street, SW1H

£1,075,000

An impeccably refurbished and beautifully presented two-bedroom apartment, thoughtfully redesigned to offer effortless contemporary living. This stunning home is in immaculate, turn-key condition, available with no onward chain.

### Features

- Two Bathrooms (One En-Suite)
- Very High Specification
- Two Double Bedrooms
- 7th Floor (With Lift)
- No Onward Chain
- 24hr Porter

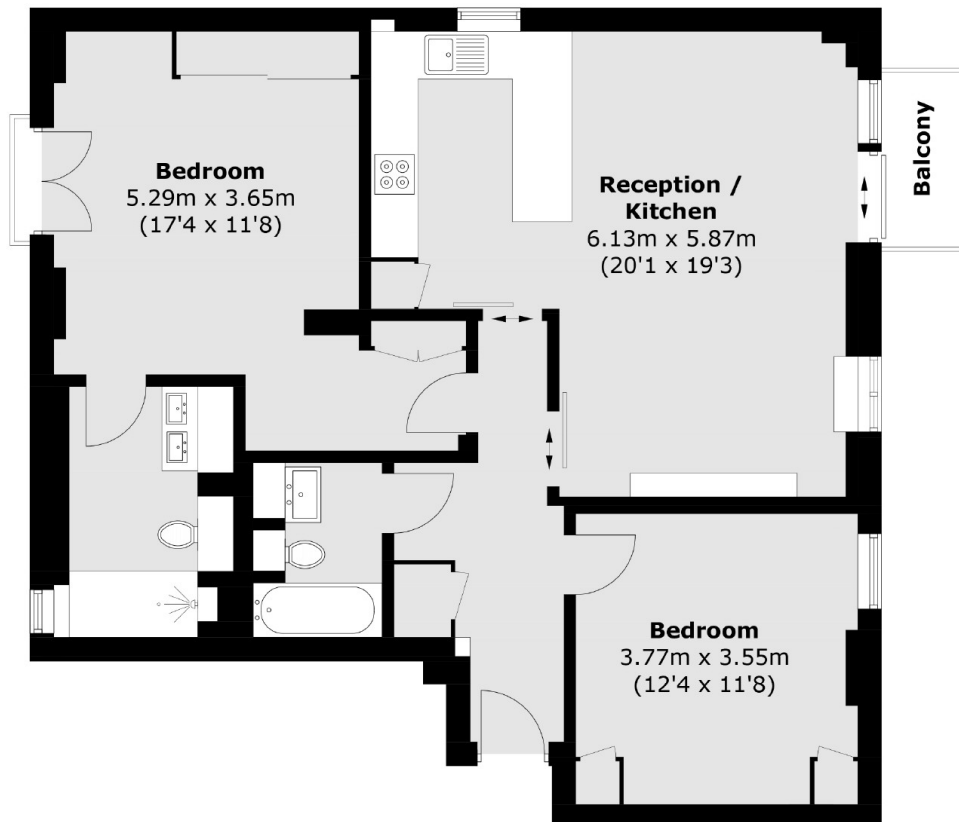


## Victoria Street, SW1H

Artillery Mansions enjoys a prime position at the southern end of Victoria Street, just moments from the historic grandeur of Westminster Abbey. Residents are within easy reach of some of London's most iconic landmarks, including the Houses of Parliament, Buckingham Palace, and the tranquil expanses of St James's Park. The area boasts exceptional transport links, with Victoria Station nearby providing swift access to national rail services including the Gatwick Express alongside the Victoria Line for effortless travel across the capital.



Victoria Street,  
London, SW1H



### Seventh Floor

Total area (approx.): 87.1 sq. m (937.5 sq. ft)  
Balcony: 2.2 sq. m (23.7 sq. ft)

**Dexters**

Westminster  
50 Churton Street  
London  
SW1V 2LP  
Sales  
020 7590 9570

Energy Rating: C. We aim to make our particulars both accurate and reliable. However they are not guaranteed; nor do they form part of an offer or contract. If you require clarification on any points then please contact us, especially if you're traveling some distance to view. Please note that appliances and heating systems have not been tested and therefore no warranties can be given as to their good working order.

 **RICS** | Regulated  
Estate Agent  
and Letting Agent

[dexters.co.uk](https://www.dexters.co.uk)