



## Ashley Gardens, SW1P

### £1,350,000

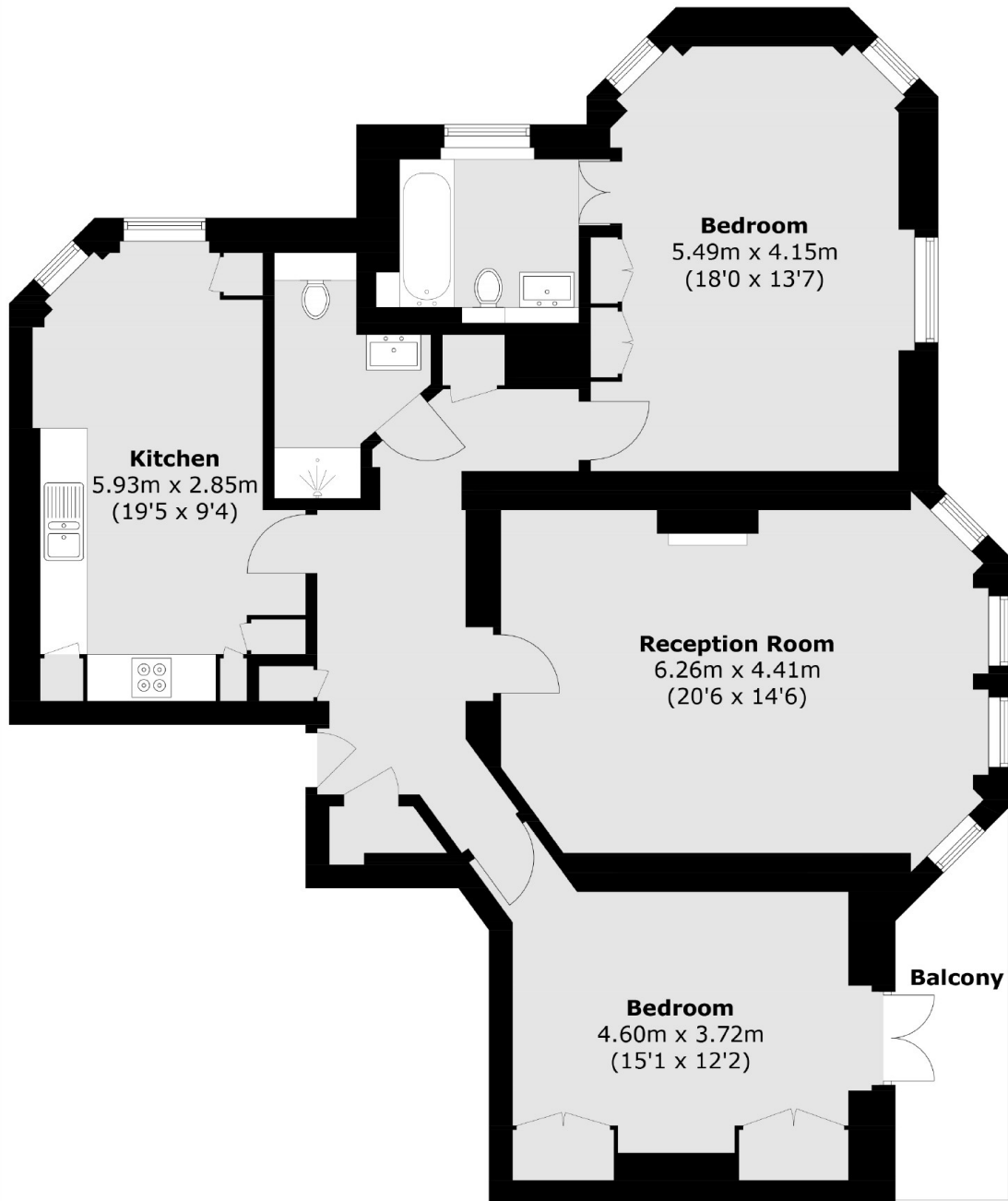
A charming, purpose-built Victorian mansion flat nestled in the heart of Westminster. This distinguished and grand residence forms part of an impressive 1890s development, located within the sought-after Westminster Cathedral Conservation Area.

Thirleby Road is ideally positioned just moments from the vibrant selection of shops, cafés, and fashionable restaurants along Victoria Street. It also benefits from outstanding transport connections at the nearby Victoria transport hub, offering Underground, National Rail, and Gatwick Express services for swift access across London and beyond.

### Features

- Two Bathrooms (En Suite)
- Two Double Bedrooms
- Newly Refurbished
- 24 Hour Concierge
- Mansion Block
- Lift Access

# Ashley Gardens, London, SW1P



## Fourth Floor

Total area (approx.): 114.6 sq. m (1,233.5 sq. ft)  
Balcony Area (approx.): 6.2 sq. m (66.7 sq. ft)