



Gloucester Street, SW1V

£650,000

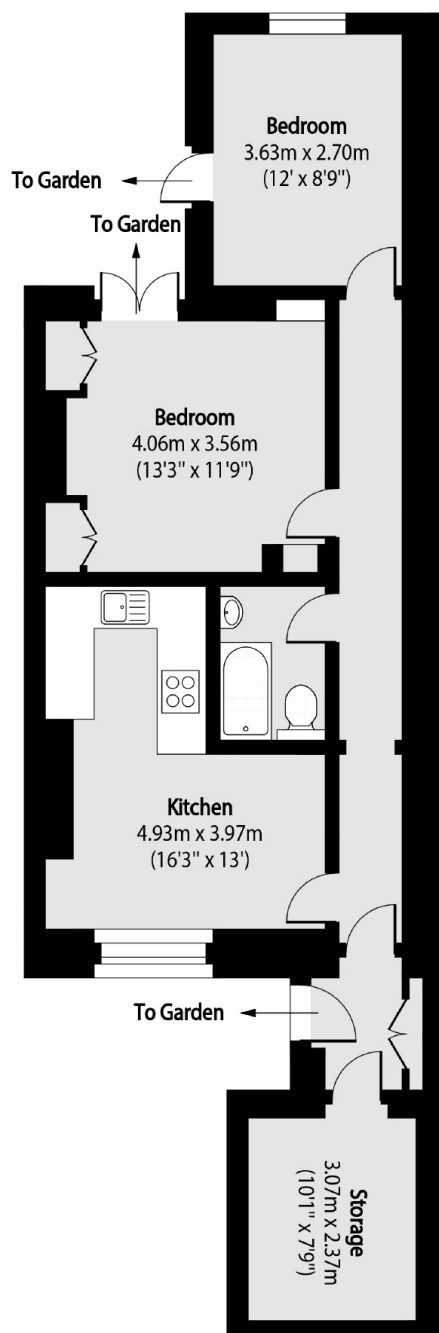
This smartly presented two-bedroom flat is situated within a handsome period building in the desirable 'Pimlico Grid'. The property boasts it's own private entrance and a secluded rear courtyard, offering a tranquil retreat in the heart of London.

Situated within the Pimlico grid, this property is located within easy reach of local amenities, boutique shops and cafe's, as well as excellent transport links from either Victoria station or Pimlico tube station.

Features

- Two Double Bedrooms
- Share of Freehold
- Private Courtyard
- Private entrance
- Storage vault
- Chain Free

Gloucester Street, London, SW1V



Lower Ground Floor

Total area (approx): 66.47 sq m (715 sq. ft)