



St. Georges Square, SW1V

£875,000

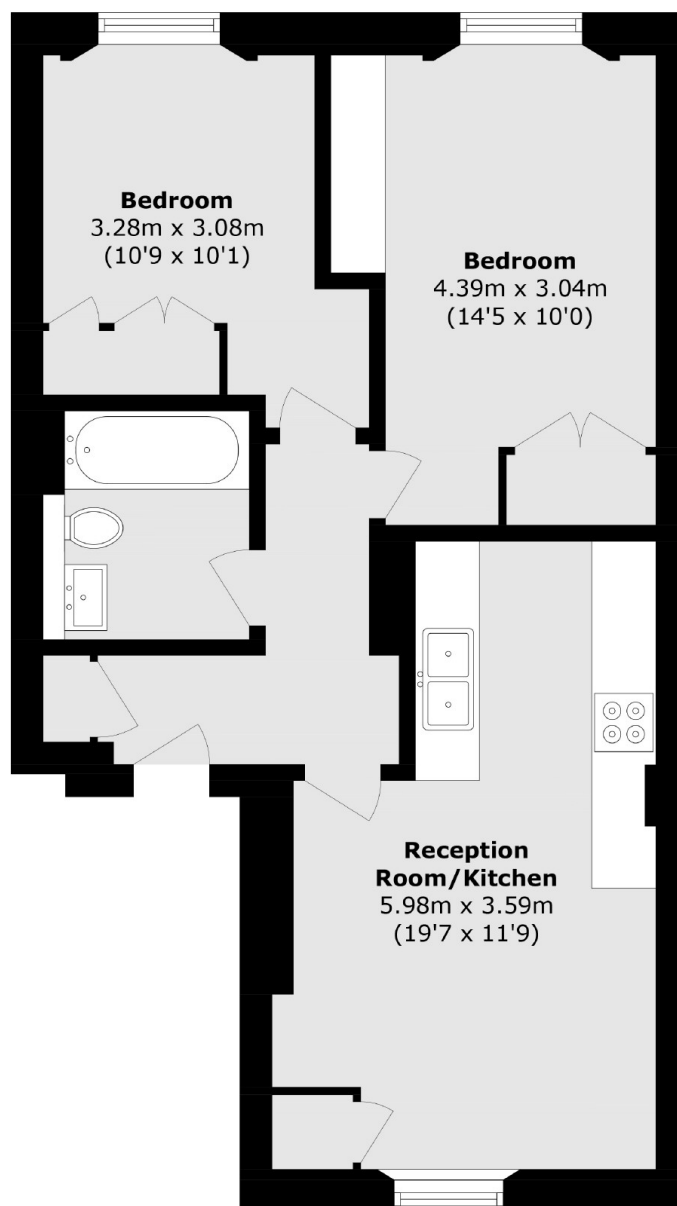
A beautifully presented two-bedroom, one-bathroom apartment set within an elegant stucco-fronted building, featuring access to a communal roof terrace and offered to the market with no onward chain.

St George's Square benefits from excellent transport connections, with Pimlico Underground Station and Victoria Station both nearby. It is also ideally positioned within easy reach of the wide-ranging amenities of Chelsea and Belgravia.

Features

- Communal Roof Terrace
- Share Of Freehold
- No Onward Chain
- Interior Designed
- Two Bedrooms
- Second Floor

St. Georges Square, London, SW1V



Total area (approx.): 52.4 sq. m (564.0 sq. ft)