



Page Street, SW1P

£565,000

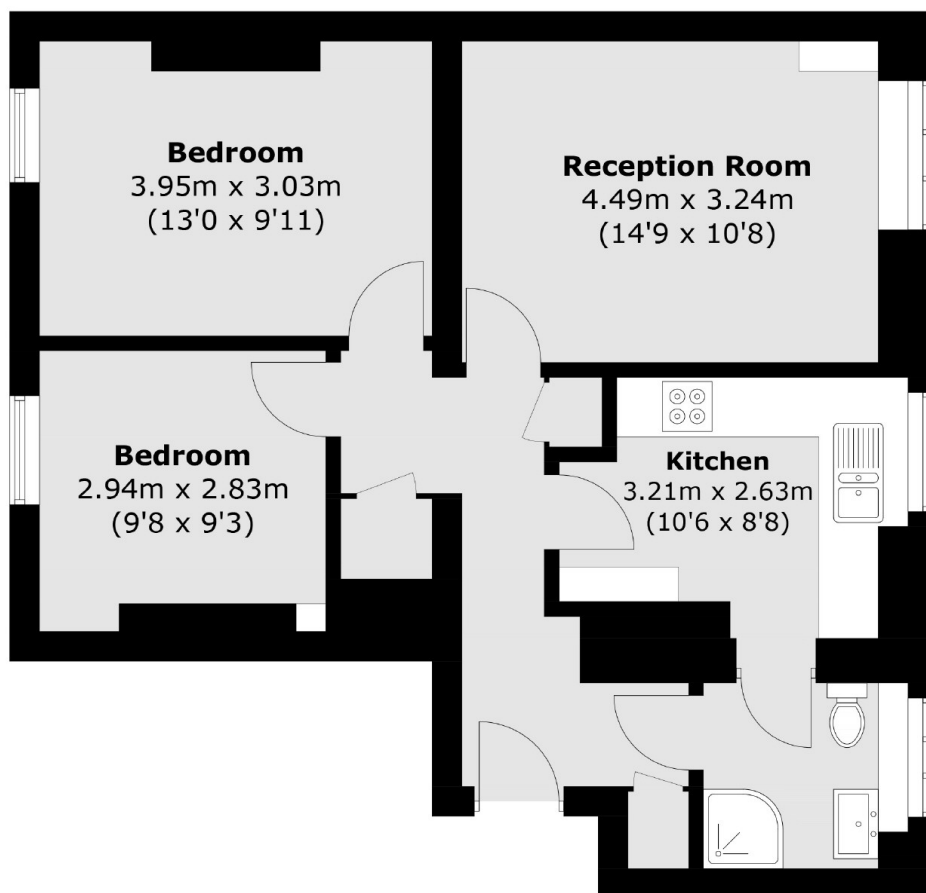
A two bedroom apartment located on the second floor of this highly desirable red brick block located in Westminster.

Page Street is located in the Heart of Westminster and close to all the amenities of Victoria Street. Transportation is provided via Victoria (Victoria, Circle, District and Mainline Services) Pimlico (Victoria) and St James's Park (Circle and District).

Features

Central Westminster Location
Leasehold c. 168 Years
Two Bedrooms
Gated Development
Separate Kitchen
Second Floor

Page Street,
London, SW1P



Total area (approx.): 61.5 sq. m (661.9 sq. ft)