



Lindsay Square, SW1V

£670,000

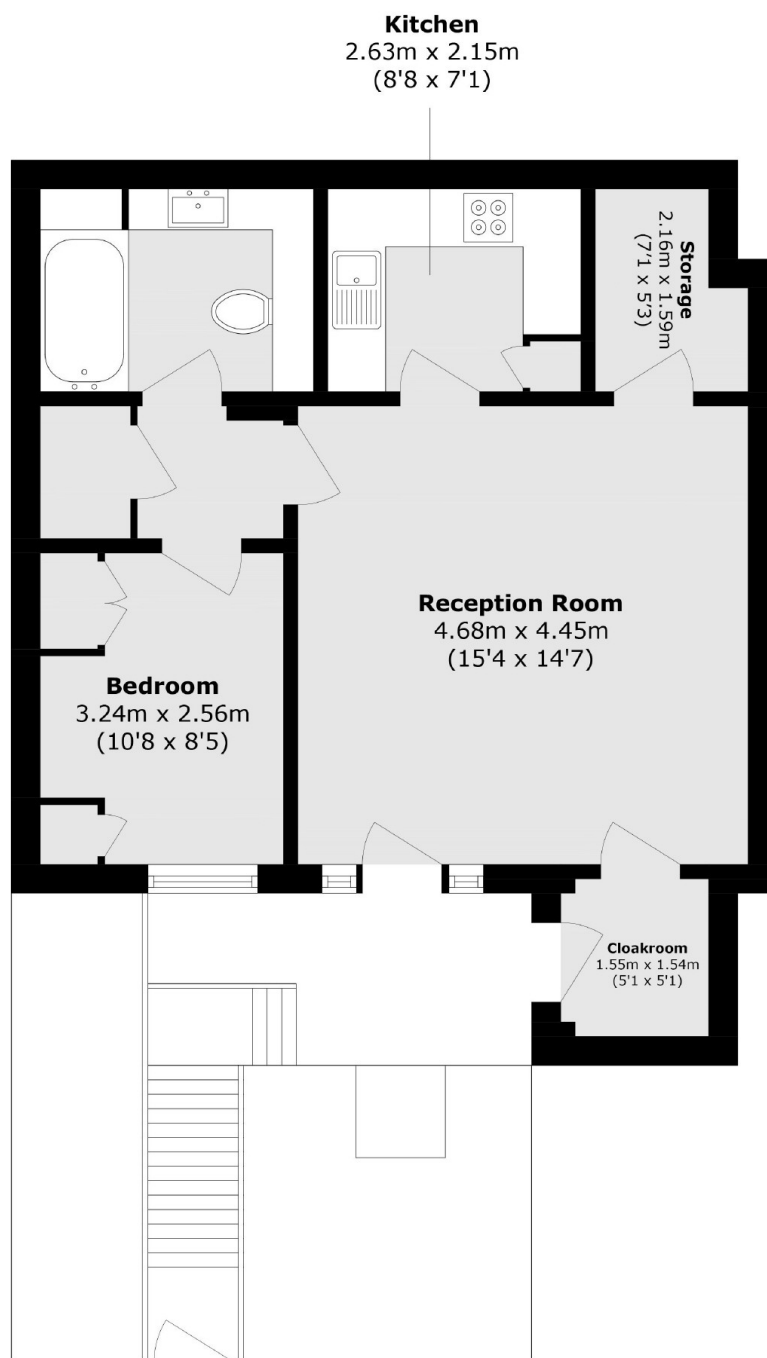
An elegantly finished one-bedroom garden apartment set within the desirable Lindsay Square, Pimlico. The property offers the rare advantage of a beautifully presented private front garden, creating a welcoming approach and valuable outdoor space. The property has been thoughtfully redesigned to offer stylish and contemporary living within every aspect and is perfect for those looking for a home they can move into and enjoy immediately.

Lindsay Square is a quiet residential development setting in Pimlico, known for its leafy communal gardens and timeless character. Built as part of Thomas Cubitt's 19th-century master plan for Pimlico, the square reflects the area's distinctive stucco-fronted charm while offering modern comfort and a welcoming community feel. Today, it provides a rare sense of tranquility just moments from the River Thames, village-style cafés, and boutique shops with Victoria and Pimlico station being within a short walking distance away.

Features

- Close To Transport Links
- Private Front Garden
- Newly Refurbished
- 24-Hour Concierge
- Communal Garden
- No Chain

Lindsay Square, London, SW1V



Total area (approx.): 54.0 sq. m (581.2 sq. ft)

Dexters

Westminster
50 Churton Street
London
SW1V 2LP
Sales
020 7590 9570

Energy Rating: D. We aim to make our particulars both accurate and reliable. However they are not guaranteed; nor do they form part of an offer or contract. If you require clarification on any points then please contact us, especially if you're traveling some distance to view. Please note that appliances and heating systems have not been tested and therefore no warranties can be given as to their good working order.

 **RICS** | Regulated
Estate Agent
and Letting Agent

[dexters.co.uk](https://www.dexters.co.uk)