



Tufton Street, SW1P
£2,200,000

Dexters



Tufton Street, SW1P

Rare to the market a modern four bedroom house which forms part of Millicent Court and benefits from two underground parking spaces and a caretaker.

Set over four floors the house is well laid out for entertaining and family life, with good sized rooms, a patio, balcony and access to the communal garden. There are four bedrooms with three bathrooms two of which are en-suite, a large reception room on the first floor and separate kitchen and dining room on the ground floor.

Tufton Street is in the heart of Westminster, located within easy reach of St James's Park and Victoria. The area includes some of London's most iconic landmarks and the many amenities, restaurants and shops of Victoria and Westminster.

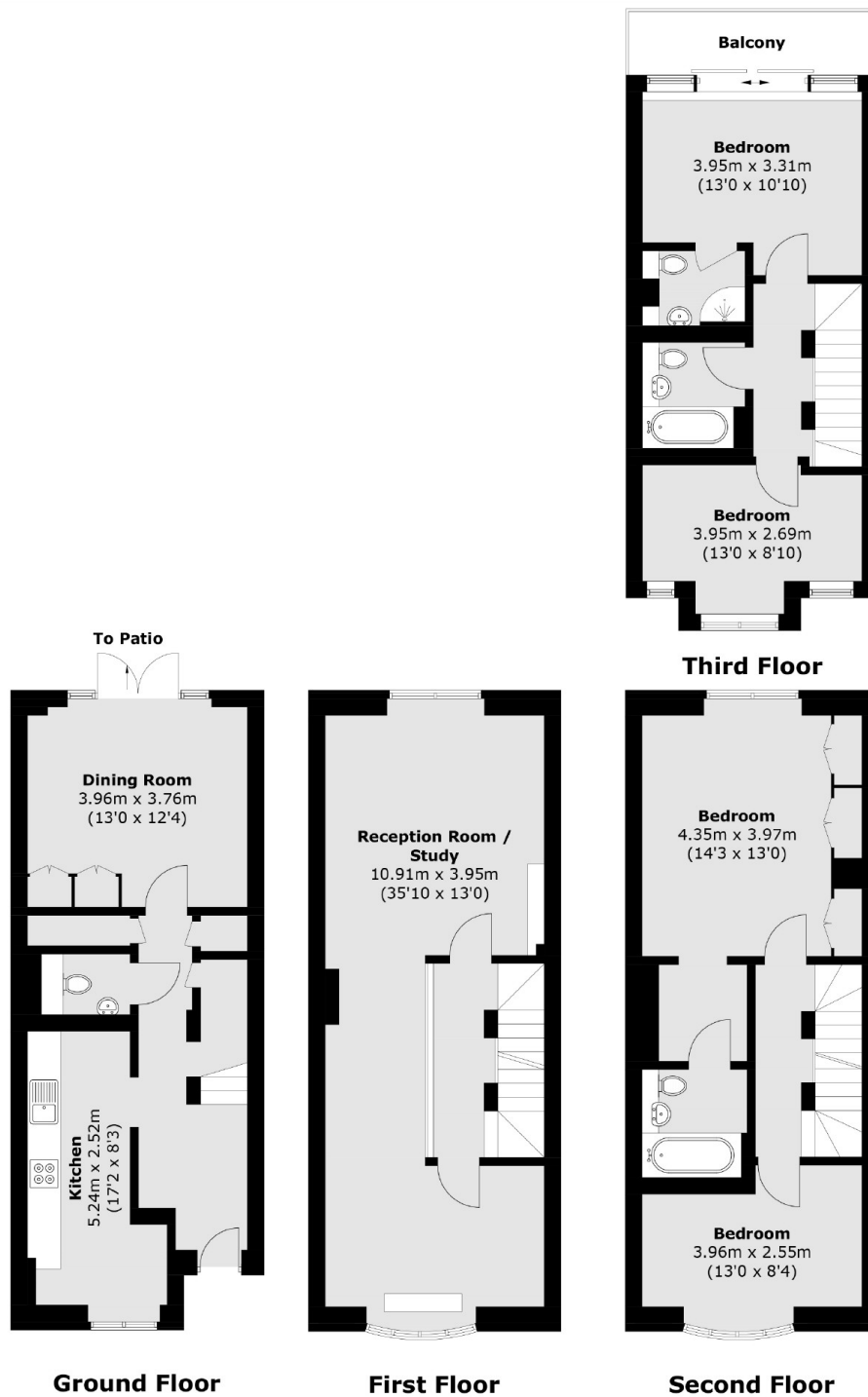
Tufton street is ideally located for transport from Westminster, Victoria and St James's Park. Waterloo and Charing Cross are also within easy reach.

Features

- Caretaker
- Balcony
- Patio
- Underground Parking
- Four Bedrooms
- Leasehold



Tufton Street, London, SW1P



Total area (approx.): 165.5 sq. m (1,781.4 sq. ft)
Balcony: 5.1 sq. m (54.9 sq. ft)

Dexters

Westminster
50 Churton Street
London
SW1V 2LP
Sales
020 7590 9570

Energy Rating: C. We aim to make our particulars both accurate and reliable. However they are not guaranteed; nor do they form part of an offer or contract. If you require clarification on any points then please contact us, especially if you're traveling some distance to view. Please note that appliances and heating systems have not been tested and therefore no warranties can be given as to their good working order.

RICS Regulated
Estate Agent
and Letting Agent

dexters.co.uk