



Palace Street, SW1E

£3,500,000

Located within the heart of Westminster, this spectacular Georgian home is spread over five floors boasting spacious accommodation, natural light and a modern finish.

Set within the Birdcage Walk Conservation area, a magnificent townhouse close to Buckingham Palace and the green open spaces of both Green Park and St James's Park, a wonderful central London location. Transport links are excellent, with Victoria underground and mainline station a short distance from the house with a direct link to Gatwick Airport and trains to the south and the south east. Westminster and St James's Park underground are also within easy reach.

Features

- Five Double Bedrooms
- Three Bathrooms/One WC
- Study
- Patio/Garden Area
- Balcony
- Vault
- Kitchen/Breakfast Room
- Sought After Location



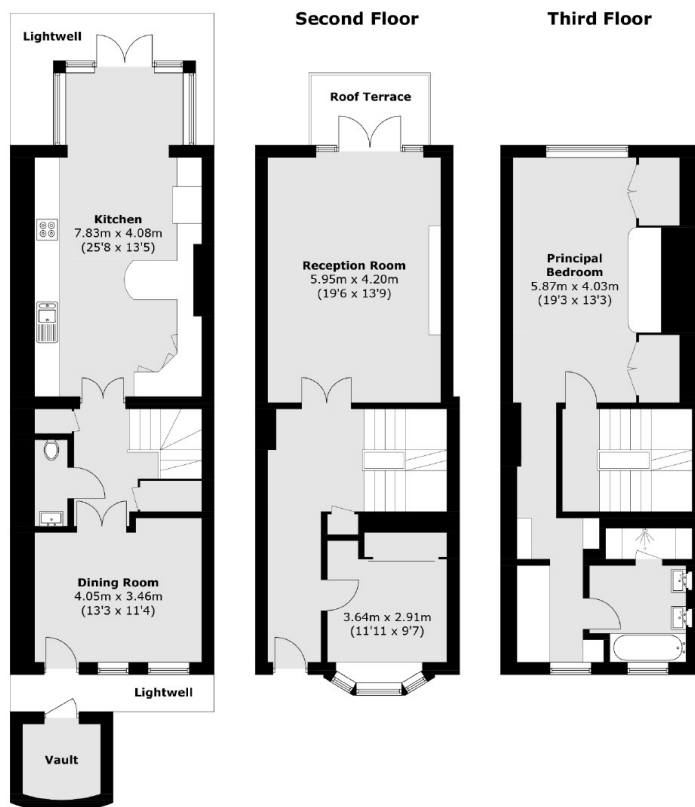
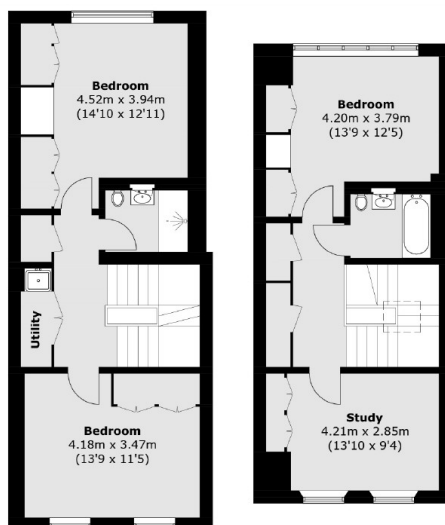
Palace Street, SW1E

Set within walking distance of both St James's park and Victoria train line the property is offered to market with no chain.

Features include a larger than average principle bedroom with en suite bathroom, four further double bedrooms, one bathroom and a shower room, large reception room with a balcony, separate dining room, modern kitchen/breakfast room with access to a garden/patio area, a study, utility area and separate vault.



Palace Street, London, SW1E



Lower Ground Floor Ground Floor First Floor

Total area (approx.): 254.8 sq. m (2,742.6 sq. ft)

Vault: 3.5 sq. m (37.7 sq. ft)

Roof Terrace: 4.8 sq. m (51.7 sq. ft)

Dexters

Westminster
50 Churton Street
London
SW1V 2LP
Sales
020 7590 9570

Energy Rating: C. We aim to make our particulars both accurate and reliable. However they are not guaranteed; nor do they form part of an offer or contract. If you require clarification on any points then please contact us, especially if you're traveling some distance to view. Please note that appliances and heating systems have not been tested and therefore no warranties can be given as to their good working order.



dexters.co.uk