



## Carlisle Place, SW1P

### £1,400,000

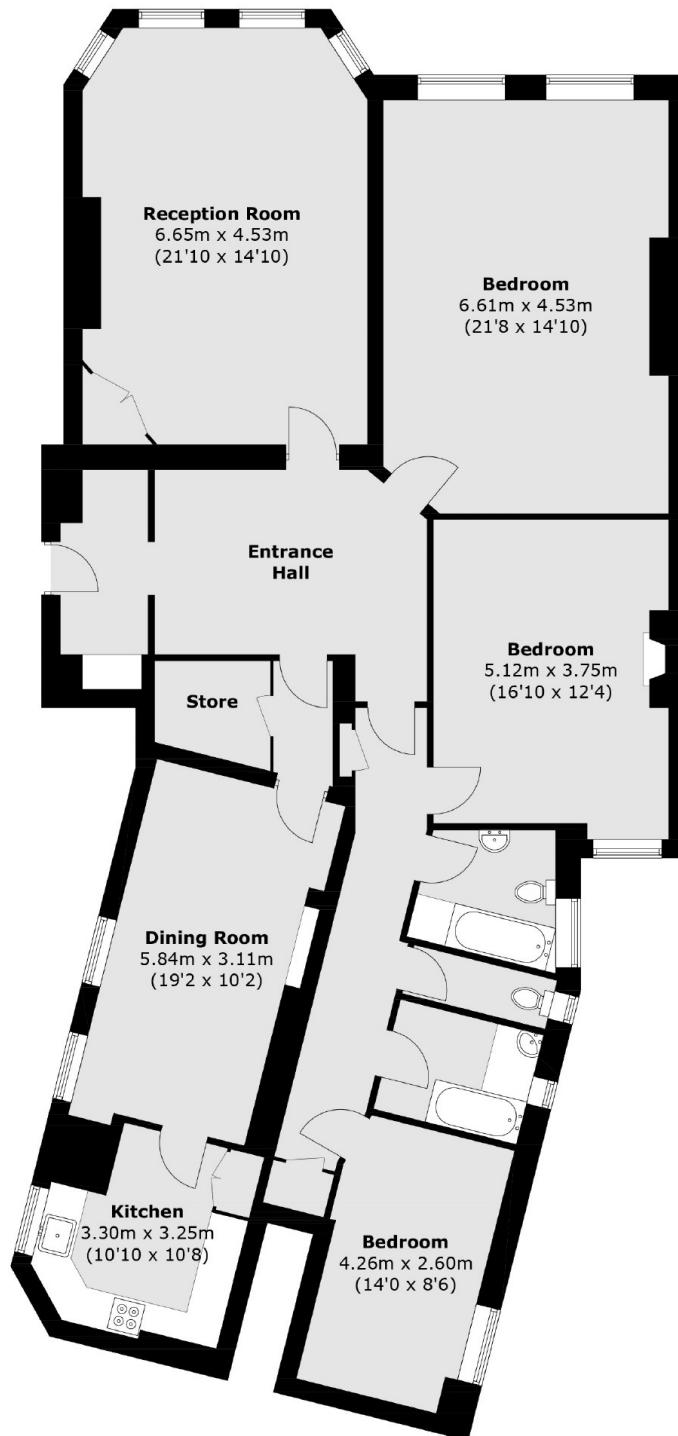
A rare opportunity to acquire this remarkable three bedroom, two bathroom ground floor apartment located within a highly desirable mansion block, situated a stones throw from Victoria station. This impressive purpose-built block reputed to be one of the first mansion-style developments built in Westminster.

Carlisle Place is located between Victoria Station and Westminster Cathedral. Transport links are excellent, with Victoria transport hub offering a direct link to Gatwick Airport and trains to the south and the south east.

### Features

- Three Bedrooms
- Two Bathrooms
- Long Leasehold
- High Ceilings
- Period Features
- Ground Floor
- Approx 1890sqft (175.62sqm)

# Carlisle Place, London, SW1P



## Dexters

Westminster  
50 Churton Street  
London  
SW1V 2LP  
Sales  
020 7590 9570

Energy Rating: D. We aim to make our particulars both accurate and reliable. However they are not guaranteed; nor do they form part of an offer or contract. If you require clarification on any points then please contact us, especially if you're traveling some distance to view. Please note that appliances and heating systems have not been tested and therefore no warranties can be given as to their good working order.

 **RICS** | Regulated  
Estate Agent  
and Letting Agent

[dexters.co.uk](https://www.dexters.co.uk)