

Marsham Street, SW1P

£525,000

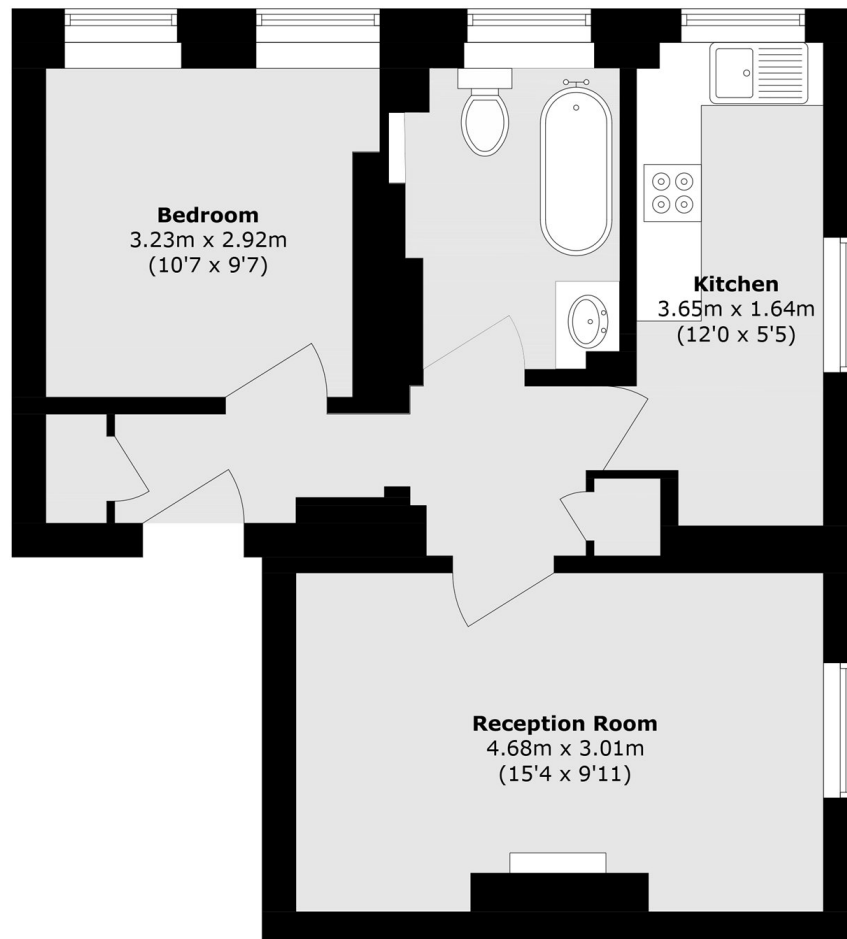
This bright and elegant one-bedroom corner positioned apartment is set on the second floor of a gated, Grade II listed development within the highly desirable Millbank Estate in Westminster. Beautifully presented throughout, the property offers an abundance of storage and comprises a spacious reception room, a fully integrated kitchen, a generous double bedroom, and a stylish bespoke-fitted bathroom.

Centrally located, the apartment is near to the Tate Britain gallery and a few minutes walk away from Pimlico and Victoria Stations. Schools, shops, restaurants and other amenities are also within close proximity.

Features

- Communal Courtyard
- Additional Storage
- Gated Development
- One Bedroom
- Second Floor
- Long Lease

Marsham Street,
London, SW1P



Second Floor

Total area (approx.): 44.4 sq. m (477.9 sq. ft)