



## St. Georges Square, SW1V

£795,000

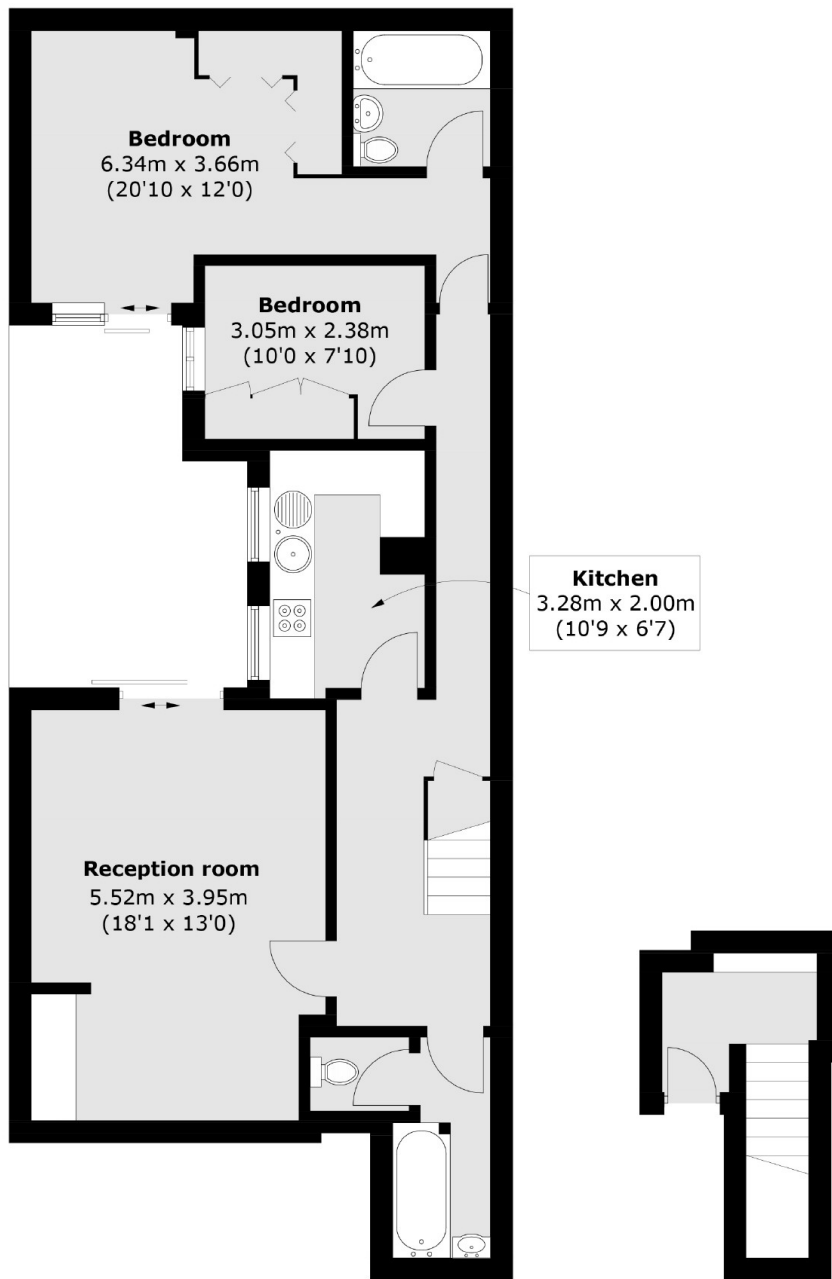
Accessed through the main entrance on the ground floor, a well-presented two-bedroom, two-bathroom apartment features excellent proportions, a well-equipped kitchen and bathrooms, and a charming private patio garden.

Conveniently located close to the gardens of St. George's Square and nearby transport links from Pimlico Underground and Victoria Station. In addition, it is within easy reach of the many amenities of Chelsea and Belgravia.

### Features

- Two Double Bedrooms
- Two Bathrooms
- St Georges Square
- Private Patio
- c. 167 Year Lease
- No Onward Chain

St. Georges Square,  
London, SW1V



**Lower Ground Floor**

**Ground Floor**

Total area (approx.): 82.5 sq. m (887.7 sq. ft)

**Dexters**

Westminster  
50 Churton Street  
London  
SW1V 2LP  
Sales  
020 7590 9570

Energy Rating: C. We aim to make our particulars both accurate and reliable. However they are not guaranteed; nor do they form part of an offer or contract. If you require clarification on any points then please contact us, especially if you're traveling some distance to view. Please note that appliances and heating systems have not been tested and therefore no warranties can be given as to their good working order.

**RICS** | Regulated  
Estate Agent  
and Letting Agent

dexters.co.uk