



## Page Street, SW1P

£550,000

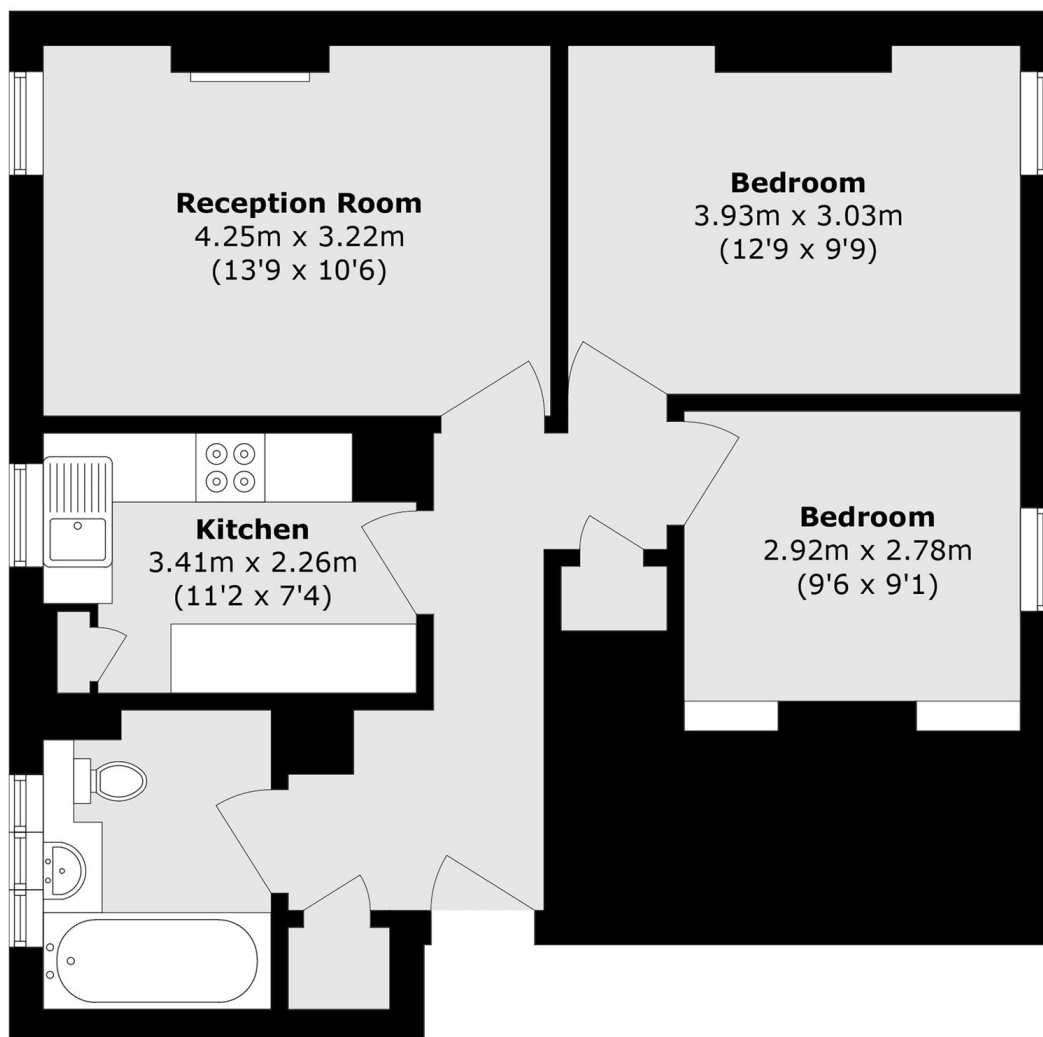
A well presented apartment located on the second floor of a highly desirable red brick block in the heart of Westminster. This property benefits from two bedrooms, ample storage and offered to market with no onward chain.

Page Street is located in the Heart of Westminster and close to all the amenities of Victoria Street. Transportation is provided via Victoria (Victoria, Circle, District and Mainline Services) Pimlico (Victoria) and St James's Park (Circle and District).

### Features

- Central Westminster Location
- Gated Development
- No Onward Chain
- Separate Kitchen
- Two Bedrooms
- Second Floor

Page Street,  
London, SW1P



Total area (approx.): 58.9 sq. m (633.9 sq. ft)

**Dexters**

Westminster  
50 Churton Street  
London  
SW1V 2LP  
Sales  
020 7590 9570

Energy Rating: . We aim to make our particulars both accurate and reliable. However they are not guaranteed; nor do they form part of an offer or contract. If you require clarification on any points then please contact us, especially if you're traveling some distance to view. Please note that appliances and heating systems have not been tested and therefore no warranties can be given as to their good working order.

 **RICS** | Regulated  
Estate Agent  
and Letting Agent

[dexters.co.uk](https://www.dexters.co.uk)