



John Islip Street, SW1P

£1,845,000

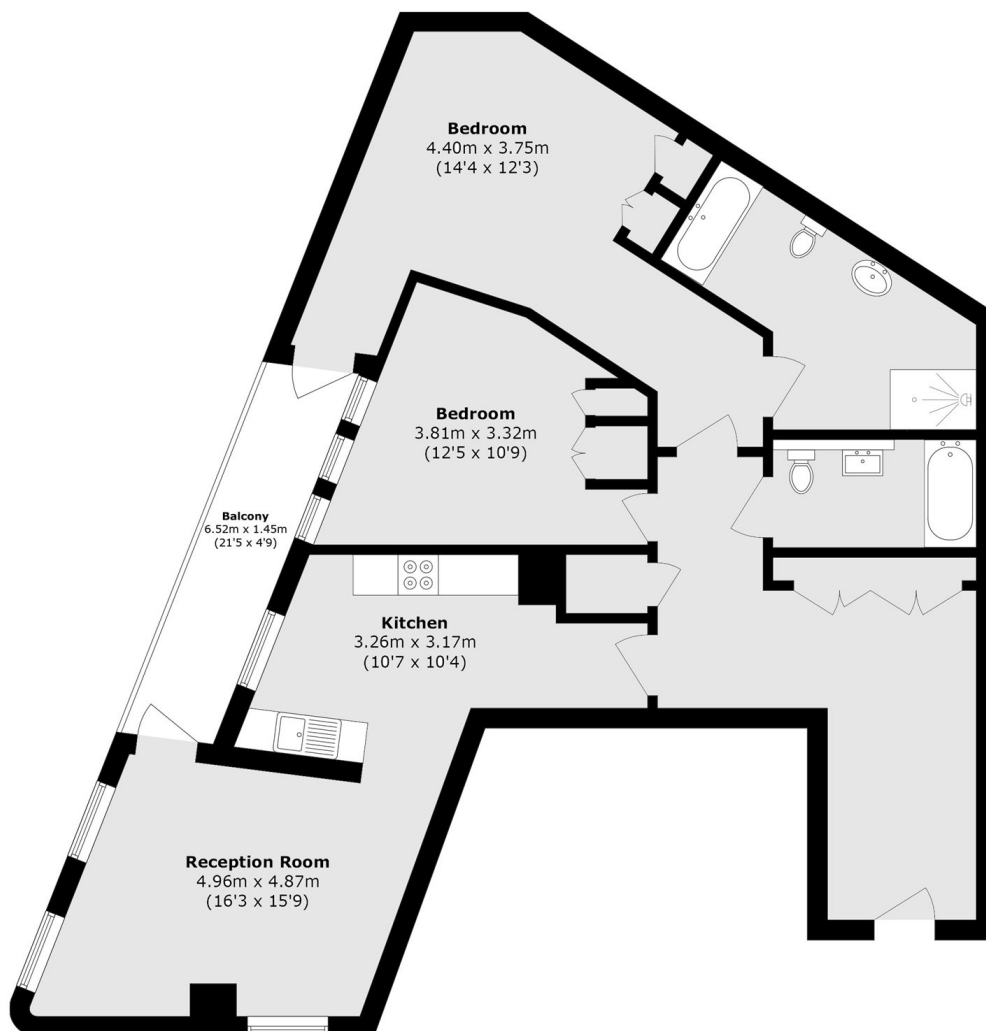
Cleland House is one of Westminster's most prestigious apartment buildings, part of the well renowned Abell & Cleland development built by Berkley Homes. This property offers an abundance of amenities, including a state of the art gym, swimming pool, 24-hour concierge and private landscaped garden.

The Abell and Cleland development is located directly next to Burberry's London headquarters on Dean Ryle Street and within walking distance of the Houses of Parliament, Downing Street and St James Park. Transport links close by include Westminster and Pimlico tube station which are within short distance.

Features

- Gym/Swimming Pool
- 24-Hour Concierge
- Two Bedrooms
- Two Bathrooms
- Long Lease
- Balcony

John Islip Street,
London, SW1P



Total area (approx.): 118.6 sq. m (1276.6 sq. ft)

Dexters

Westminster
50 Churton Street
London
SW1V 2LP
Sales
020 7590 9570

Energy Rating: . We aim to make our particulars both accurate and reliable. However they are not guaranteed; nor do they form part of an offer or contract. If you require clarification on any points then please contact us, especially if you're traveling some distance to view. Please note that appliances and heating systems have not been tested and therefore no warranties can be given as to their good working order.

RICS | Regulated
Estate Agent
and Letting Agent

dexters.co.uk