



## Palace Street, SW1E

£1,025,000

An exceptional and generously proportioned two-bedroom apartment, spanning the ground and first floors of the prestigious 'The View' development. Perfectly situated in a prime central location, this sought-after property boasts a private balcony, 24-hour concierge service, and a seamless blend of style, comfort, and convenience.

The View is ideally located on Palace Street, just moments from Buckingham Palace and the vibrant array of shops and restaurants along Victoria Street. Its prime position places you within a short stroll of iconic landmarks such as Parliament and the serene green spaces of St. James's Park.

### Features

- Prime Westminster Location
- Split Level Accommodation
- Two Double Bedrooms
- Large Private Balcony
- 24 Hour Concierge
- Chain Free



## Palace Street, SW1E

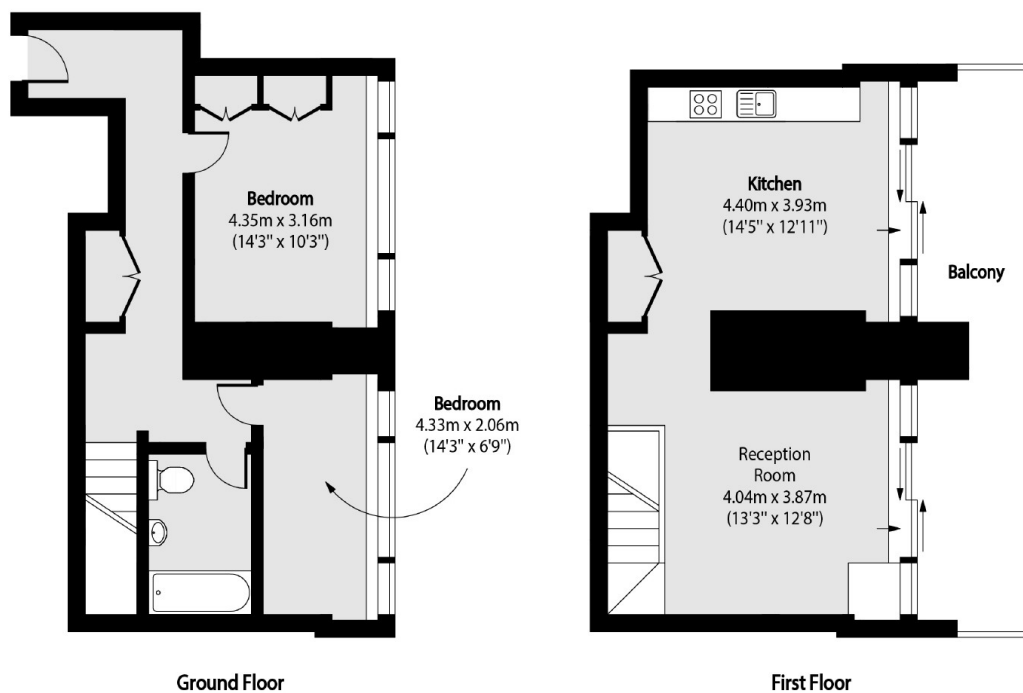
The property boasts two well-proportioned bedrooms, a sleek and modern bathroom, and a spacious eat-in kitchen that's ideal for both casual dining and entertaining. The large private balcony extends your living area outdoors.

Set across two levels, this home offers a sense of space and privacy, making it an excellent choice for professionals, couples, or small families, with its thoughtfully designed layout and versatile living spaces.





# Palace Street, London, SW1E



Total area (approx): 86.67 sq m (933 sq. ft)

Balcony total area (approx): 18.83 sq m (203 sq. ft)

## Dexters

Westminster  
50 Churton Street  
London  
SW1V 2LP  
Sales  
020 7590 9570

Energy Rating: D. We aim to make our particulars both accurate and reliable. However they are not guaranteed; nor do they form part of an offer or contract. If you require clarification on any points then please contact us, especially if you're traveling some distance to view. Please note that appliances and heating systems have not been tested and therefore no warranties can be given as to their good working order.

 **RICS** | Regulated  
Estate Agent  
and Letting Agent

[dexters.co.uk](https://www.dexters.co.uk)