



## Horseferry Road, SW1P

### £1,250,000

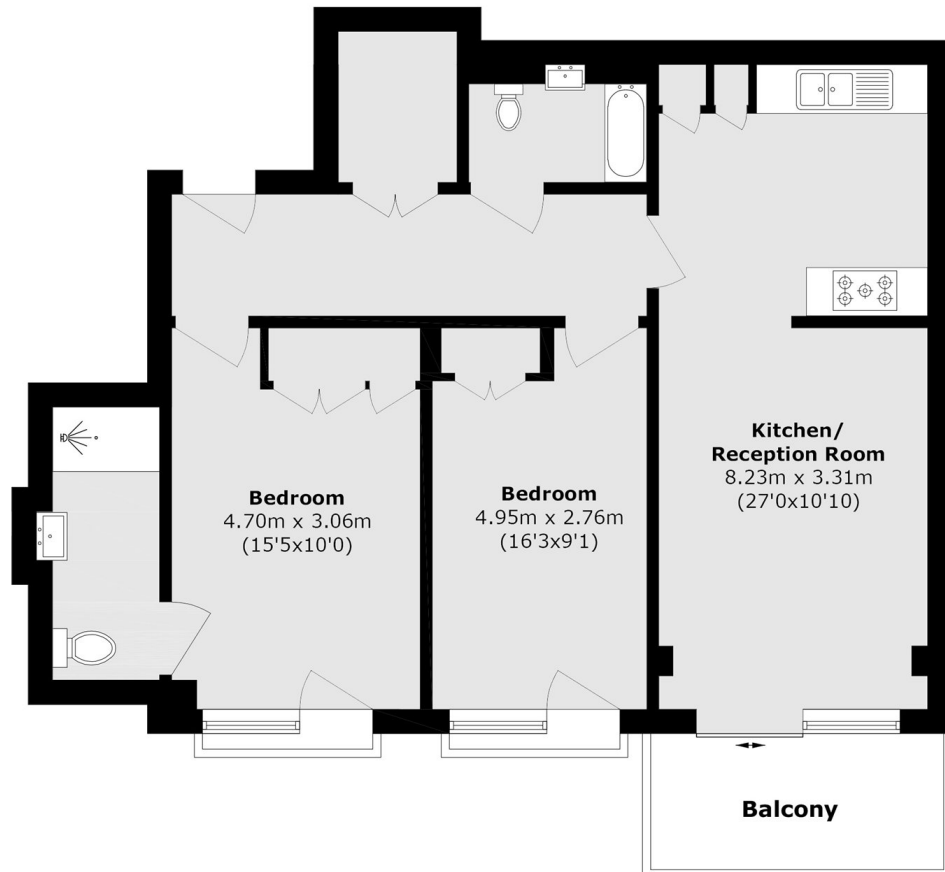
This property is located in the heart of Westminster and comprises of two double bedrooms, two bathrooms and an open plan kitchen and living area. This apartment benefits from a private balcony overlooking the communal gardens, a fully equipped gym and a concierge.

The Courthouse lies on the corner of Marsham Street and Romney Street and is only a short distance to St. James's Park, Buckingham Palace, Parliament Square and the River Thames. There are superb transport links at St. James's Park (Circle and District Lines), Victoria Station (Gatwick Express, British Rail Mainline, Circle, District and Victoria lines) with a further tube station at Westminster (Jubilee Line).

### Features

- Two Bedrooms
- Two Bathrooms
- Private Balcony
- Concierge
- Communal Gardens
- Westminster

# Horseferry Road, London, SW1P



Total area (approx.): 76.4 sq. m (822.4 sq. ft)

Balcony area (approx.): 6.04 sq. m (65.0 sq. ft)

## Dexters

Westminster  
50 Churton Street  
London  
SW1V 2LP  
Sales  
020 7590 9570

Energy Rating: . We aim to make our particulars both accurate and reliable. However they are not guaranteed; nor do they form part of an offer or contract. If you require clarification on any points then please contact us, especially if you're traveling some distance to view. Please note that appliances and heating systems have not been tested and therefore no warranties can be given as to their good working order.

 **RICS** | Regulated  
Estate Agent  
and Letting Agent

[dexters.co.uk](https://www.dexters.co.uk)